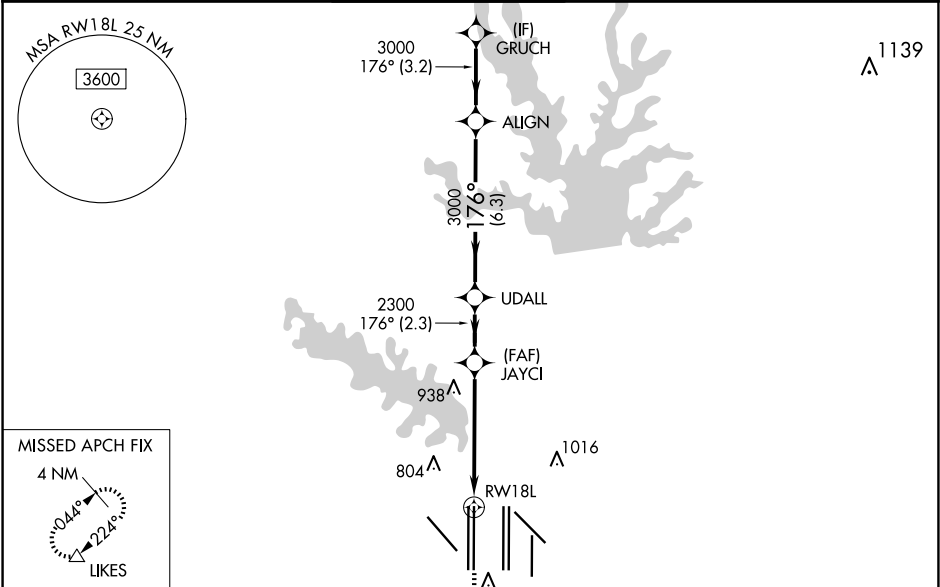
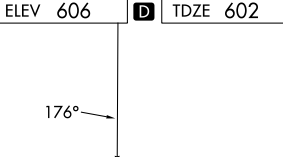
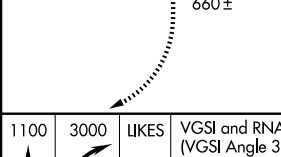


WAAS CH <b>86807</b> <b>W18A</b>	APP CRS <b>176°</b>	Rwy Ldg <b>13401</b> TDZE <b>602</b> Apt Elev <b>606</b>	<b>RNAV (GPS) RWY 18L</b> DALLAS-FORT WORTH INTL (DFW)	
--	------------------------	--	---	--

RADAR required for procedure entry. RNP APCH.			<div>MALSRL</div> <div></div>	MISSED APPROACH: Climb to 1100, then climbing right turn to 3000 direct LIKES and hold.	
Simultaneous approach authorized with Rwy 17L/C/R. For uncompensated Baro-VNAV systems, LNAV/VNAV NA below -4°C or above 54°C. LNAV procedure NA during simultaneous operations. Use of FD or AP providing RNAV track guidance required during simultaneous operations. For inop ALS, increase LNAV/VNAV all Cats visibility to RVR 6000 and LNAV Cats C and D visibility to 1¼ SM.					
D-ATIS ARR <b>123.775</b> DEP <b>135.925</b>	LONE STAR APP CON <b>118.425</b>	DFW TOWER <b>126.55 127.5</b> EAST <b>124.15 134.9</b> WEST	GND CON <b>121.65 121.8</b> EAST <b>121.85</b> WEST	CLNC DEL <b>128.25</b>	CPDLC



ELEV 606	<b>D</b>	TDZE 602
		
HIRL all Rwy's REIL Rwy's 13L and 31L TDZ/CL all Rwy's except 13L and 31L		

1100	3000	LIKES	VGS1 and RNAV glidepath not coincident (VGS1 Angle 3.00/TCH 70).	
*LNAV only.		JAYCI	UDALL	ALIGN
		2300	3000	GRUCH
RW18L		2300	3000	4000
1.7 NM		3.5 NM	2.3 NM	6.3 NM
3.2 NM		GP 3.00° TCH 55		
CATEGORY	A	B	C	D
LPV DA	802/18 200 (200-1/2)			
LNAV/ VNAV DA	1013/40 411 (500-3/4)			
LNAV MDA	1220/24 618 (700-1/2)		1220-1 3/8 618 (700-1 3/8)	