

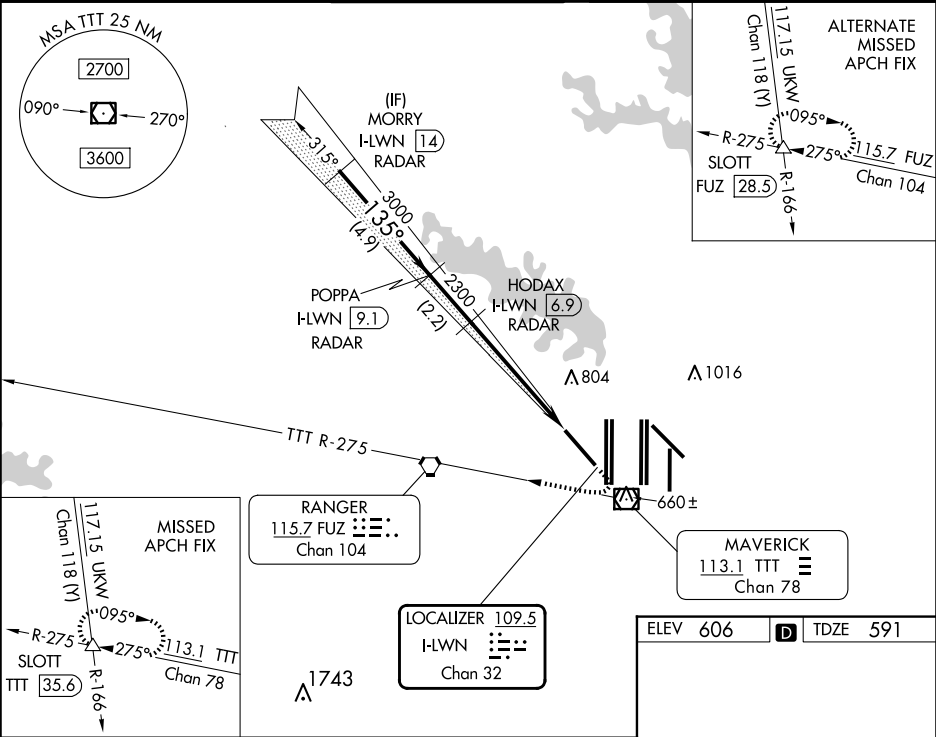
LOC/DME I-LWN	APP CRS	Rwy Ldg	9300
109.5	135°	TDZE	591
Chan 32		Apt Elev	606

ILS Z or LOC Z RWY 13R

DALLAS-FORT WORTH INTL (DFW)

RADAR required for procedure entry. DME or RADAR required for LOC only.	MALSR 	MISSED APPROACH: Climb to 1560 then climbing right turn to 3000 on heading 230° and TTT VOR/DME R-275 to SLOTT INT/TTT 35.6 DME and hold.
--	-----------	---

D-ATIS ARR 123.775 DEP 135.925	LONE STAR APP CON 133.15 118.1	DFW TOWER 126.55 127.5 EAST 124.15 134.9 WEST	GND CON 121.65 121.8 EAST 121.85 WEST	CLNC DEL 128.25	CPDLC
--------------------------------------	-----------------------------------	---	---	--------------------	-------



VGSI and ILS glidepath not coincident (VGSI Angle 3.00/TCH 71).				1560	3000	TTT R-275	SLOTT
				↑	hdg 230°		△
				3000	135°	3000	
				GS 3.00°	TCH 55	2300	
				4.9 NM	2.2 NM	5.2 NM	
CATEGORY	A	B	C	D			
S-ILS 13R	791/18		200 (200-½)				
S-LOC 13R	1240/24	649 (700-½)	1240-13⁄8	649 (700-13⁄8)			

HIREL all Rwy's	
REIL Rwy's 13L and 31L	
TDZ/CL all Rwy's except 13L, and 31L	
FAF to MAP 5.2 NM	
Knots	60 90 120 150 180
Min:Sec	5:12 3:28 2:36 2:05 1:44