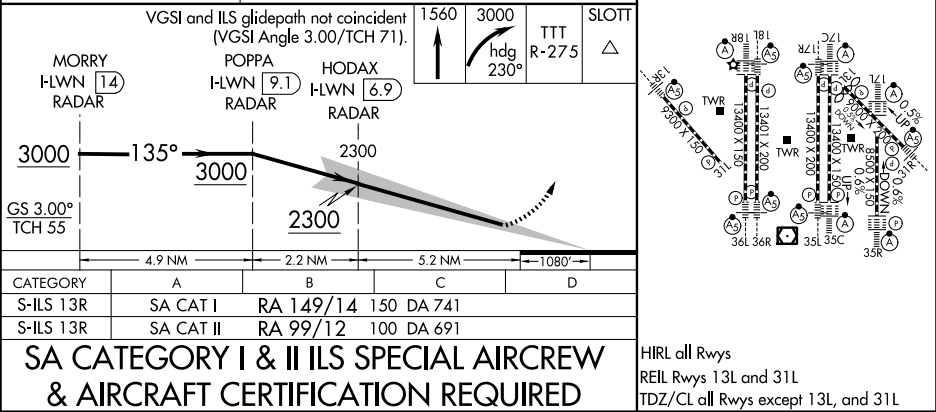
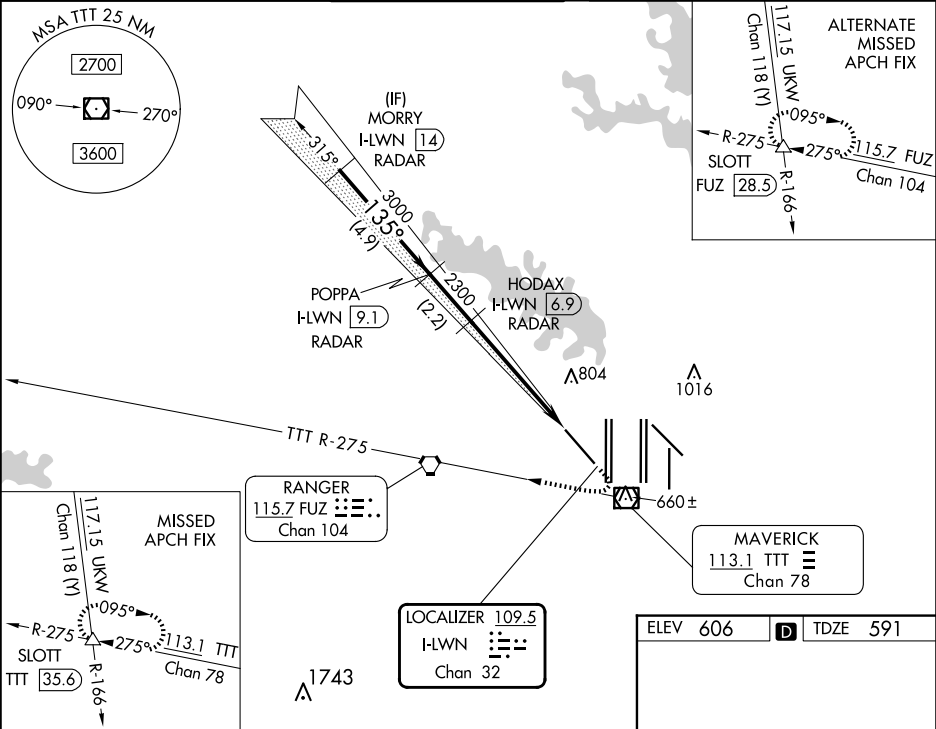


LOC/DME I-LWN 109.5 Chan 32	APP CRS 135°	Rwy Ldg TDZE 591 Apt Elev 606	ILS Z RWY 13R (SA CAT I & II) DALLAS-FORT WORTH INTL (DFW)
---	------------------------	---	--

RADAR required for procedure entry.		MALSR 	MISSED APPROACH: Climb to 1560 then climbing right turn to 3000 on heading 230° and TTT VOR/DME R-275 to SLOTT INT/TTT 35.6 DME and hold.	
SA Cat I: Requires specific OPSPEC, MSPEC, or LOA approval and use of HUD to DH. SA Cat II: Reduced lighting: Requires specific OPSPEC, MSPEC, or LOA approval and use of autoland or HUD to touchdown.				

D-ATIS ARR 123.775 DEP 135.925	LONE STAR APP CON 133.15 118.1	DFW TOWER 126.55 127.5 EAST 124.15 134.9 WEST	GND CON 121.65 121.8 EAST 121.85 WEST	CINC DEL 128.25	CPDLC
--	--	---	---	---------------------------	-------



DALLAS-FORT WORTH, TEXAS		DALLAS-FORT WORTH INTL (DFW)	
Amdt 9C 20FEB25		ILS Z RWY 13R (SA CAT I & II)	