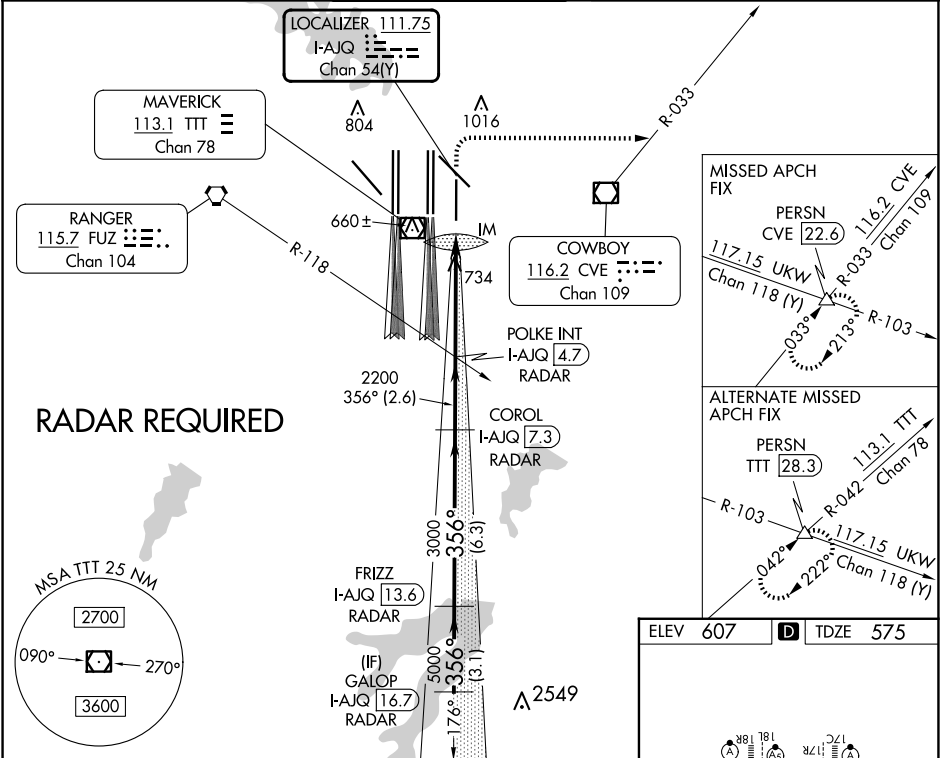


LOC/DME I-AJQ 111.75 Chan 54 (Y)	APP CRS 356°	Rwy Ldg TDZE 575 Apt Elev 607	ILS or LOC RWY 35R DALLAS-FORT WORTH INTL (DFW)	
--	------------------------	---	--	--

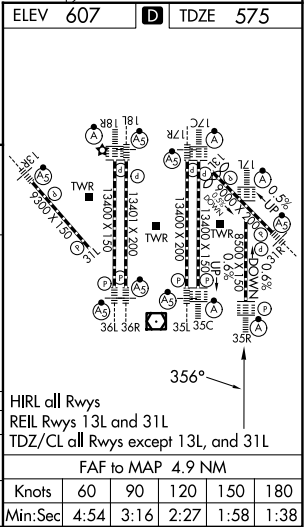
Simultaneous approach authorized with Rwy 36L/R and Rwy 35L/C. DME required.		ALSF-2	MISSED APPROACH: Climb to 1040 then climbing right turn to 3000 on heading 090° and CVE VOR/DME R-033 to PERSN/CVE 22.6 DME and hold.	
---	--	--------	---	--

D-ATIS ARR 123.775 DEP 135.925	LONE STAR APP CON 119.4	DFW TOWER 126.55 127.5 EAST 124.15 134.9 WEST	GND CON 121.65 121.8 EAST 121.85 WEST	CLNC DEL 128.25	CPDLC
--	-----------------------------------	---	---	---------------------------	-------



GALOP I-AJQ 16.7 RADAR				FRIZZ I-AJQ 13.6 RADAR	COROL I-AJQ 7.3 RADAR	POLKE INT I-AJQ 4.7 RADAR	1040 3000	CVE R-033	PERSN
5000 356° 5000 3000 2200				*I-AJQ 1.1 I-AJQ DME ANTENNA IM I-AJQ 0.2		*LOC only			
GS 3.00° TCH 58				VGSi and ILS glidepath not coincident (VGSi Angle 3.00/TCH 73).					
3.1 NM 6.3 NM 2.6 NM 3.7 NM 1.1 0.1									
CATEGORY	A	B	C	D					
S-ILS 35R	775/18 200 (200-½)								
S-LOC 35R	1040/24	465 (500-½)	1040/50	465 (500-1)					
DALLAS-FORT WORTH, TEXAS									
Amdt 4B 18SEP14									

HIRL all Rwy's									
REIL Rwy's 13L and 31L									
TDZ/CL all Rwy's except 13L, and 31L									
FAF to MAP 4.9 NM									
Knots	60	90	120	150	180				
Min:Sec	4:54	3:16	2:27	1:58	1:38				



SC-2, 10 JUL 2025 to 07 AUG 2025

SC-2, 10 JUL 2025 to 07 AUG 2025