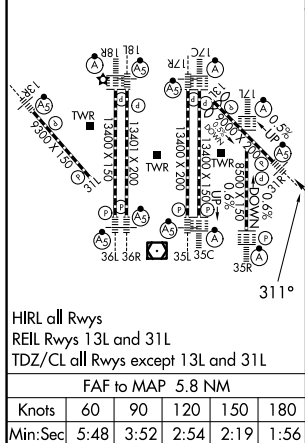


ILS or LOC RWY 31R
DALLAS-FORT WORTH INTL (DFW)

MISSED APPROACH: Climb to 1100 then climbing right turn to 3000 on heading 125° and TTT VOR/DME R-084 to SOLDO/TTT 35.8 DME and hold.



| | | | | | | | |
|-------------------|--------------------|------------------|------------|-----------------|-------------------|--------------------|--|
| 1100 ↑ | 3000 | TTT R-084 | SOLDO △ | FMS I-RRR [7.3] | VANDE I-RRR [9.3] | GACHO I-RRR [16.6] | TULOY I-RRR [20.6] |
| *LOC only. | | | | RADAR | RADAR | RADAR | RADAR |
| | | GUKE I-RRR [3.1] | | 2400 | | 311° 5000 | 311° 5000 |
| | | | | | | | GS 3.00° TCH 53 |
| | | | | | | | VGSI and ILS glidepath not coincident (VGSI Angle 3.00/TCH 69). |
| | | | | | | | |
| CATEGORY | A | B | C | D | | | |
| S-ILS 31R | 723/18 200 (200-½) | | | | | | |
| S-LOC 31R | 1060/24 | 537 (500-½) | 1060/55 | 537 (500-1¼) | | | |
| GUKE FIX MINIMUMS | | | | | | | |
| S-LOC 31R | 880/24 | 357 (300-½) | 880/30 | 357 (300-¾) | | | |

SC-2. 10 JUL 2025 to 07 AUG 2025