

LOC/DME I-VYIN	APP CRS	Rwy Ldg	18R	18L
111.9	176°	TDZE	13400	13401
Chan 56		Apt Elev	607	602
			607	607

ILS or LOC RWY 18R

DALLAS-FORT WORTH INTL (DFW)

⚠ Inop table does not apply to Sidestep 18L Cats A and B. DME or RADAR required. Simultaneous approach authorized with Rwy 17 L/C/R. For inop ALSF/MALSR, increase S-LOC 18R Cat C/D and Sidestep 18L Cat C visibility to 1¾ mile.

Rwy 18R ALSF-2

Rwy 18L MALSR

MISSED APPROACH: Climb to 1100 then climbing right turn to 3000 on heading 250° and FUZ VORTAC R-222 to LIKES INT/FUZ VORTAC 27 DME and hold.

ARR D-ATIS 123.775
DEP 135.925

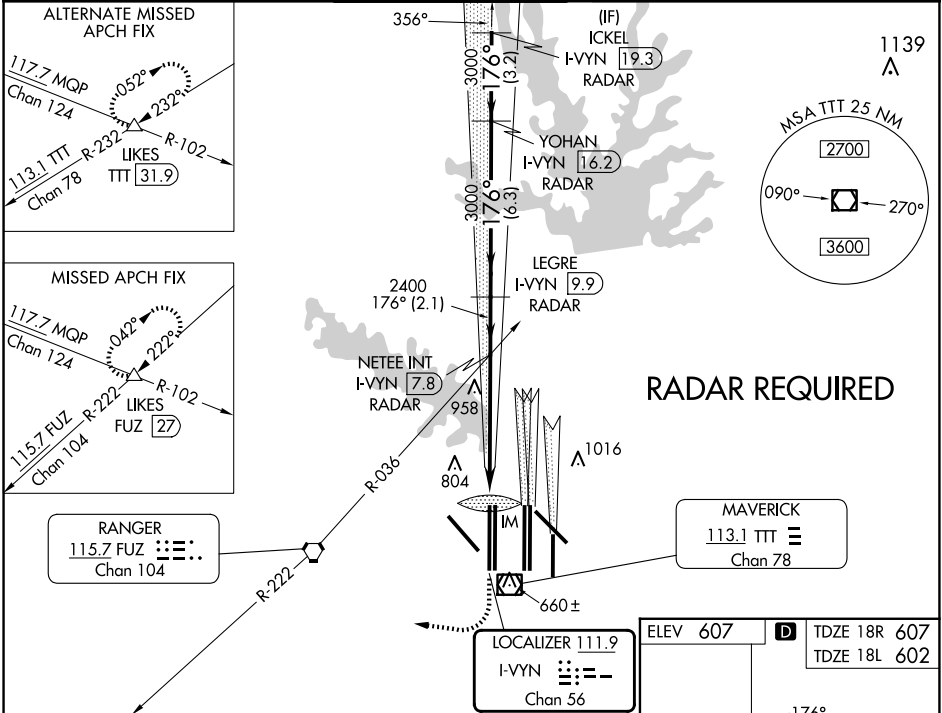
LONE STAR APP CON 118.425

DFW TOWER 126.55 127.5 EAST
124.15 134.9 WEST

GND CON 121.65 121.8 EAST
121.85 WEST

CLNC DEL 128.25

CPDLC



1100	3000	LIKES	VGSI and ILS glidepath not coincident (VGSI Angle 3.00/TCH 74).	ICKEL
hdg 250°	FUZ R-222	△	NETEE INT I-VYIN 7.8 RADAR	I-VYIN 19.3 RADAR
*LOC only	*I-VYIN 4.1		LEGRE I-VYIN 9.9 RADAR	YOHAN I-VYIN 16.2 RADAR
IM	I-VYIN 2.4			
0.1	1.6 NM	3.8 NM	2.1 NM	6.3 NM
3000	2400	3000	3000	4000
GS 3.00°	TCH 59			
CATEGORY	A	B	C	D
S-ILS 18R		807/18	200 (200-½)	
S-LOC 18R	1220/24	613 (700-½)	1220-1¾	613 (700-1¾)
SIDESTEP 18L	1220/50	618 (700-1)	1220-1¾	1220-1½
			618 (700-1¾)	618 (700-1½)

