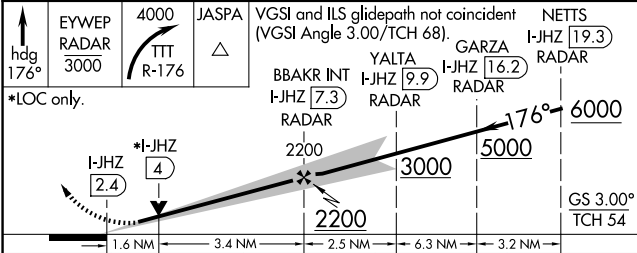
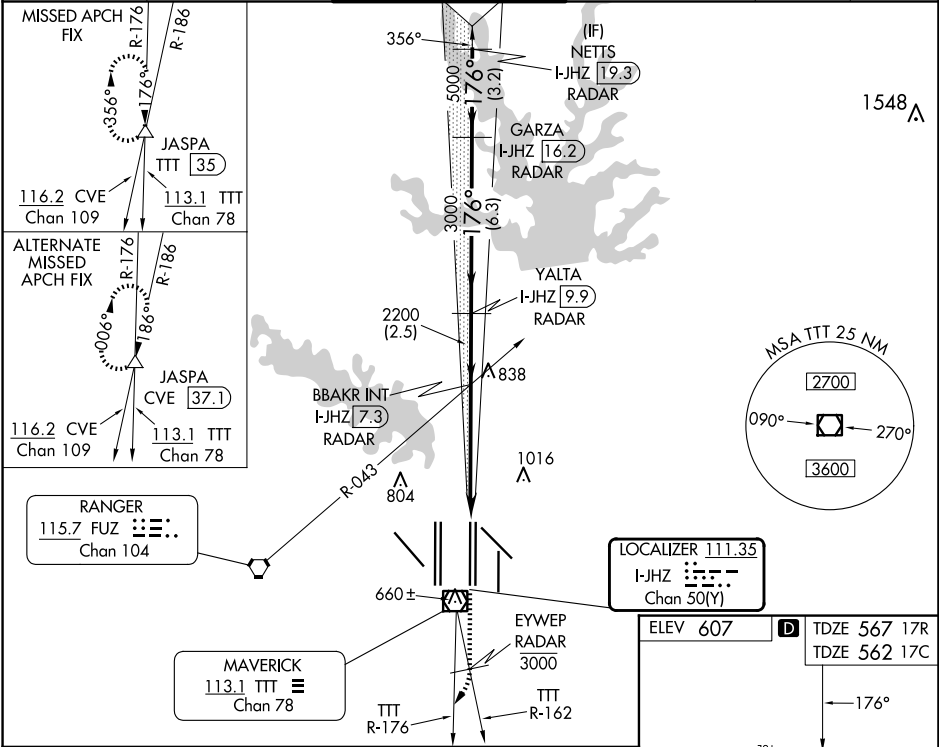


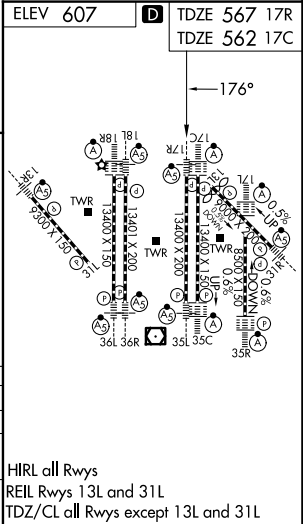
LOC/DME I-JHZ 111.35 Chan 50(Y)	APP CRS 176°	Rwy Ldg	17R	17C
		TDZE	13400	13400
		Apf Elev	567	562
			607	607

ILS or LOC RWY 17R
DALLAS-FORT WORTH INTL (DFW)

DME and RADAR required.		Rwy 17R MALSR	Rwy 17C ALSIF-2	MISSED APPROACH: Climb on heading 176° to cross EYWEP/RADAR at or below 3000, then climbing right turn to 4000 on TTT VOR/DME R-176 to JASPA/TTT 35 DME and hold.		
Simultaneous approach authorized with Rwy 17L, 18L/R.						
D-ATIS ARR 123.775 DEP 135.925	LONE STAR APP CON 127.075	DFW TOWER 126.55 127.5 EAST 124.15 134.9 WEST		GND CON 121.65 121.8 EAST 121.85 WEST	CLNC DEL 128.25	CPDLC



CATEGORY	A	B	C	D
S-ILS 17R	767/18 200 (200-1/2)			
S-LOC 17R	1140/24 573 (600-1/2)	1140-1 1/4 573 (600-1 1/4)		
SIDESTEP 17C	1140-1 578 (600-1)	1140-1 1/2 578 (600-1 1/2)	1140-2 578 (600-2)	



SC-2, 10 JUL 2025 to 07 AUG 2025

SC-2, 10 JUL 2025 to 07 AUG 2025