

ILS or LOC RWY 17L
DALLAS-FORT WORTH INTL (DFW)

MISSED APPROACH: Climb to 1020 then climbing left turn to 3000 on heading 151° and TTT VOR/DME R-127 to TACKE/TTT 26.5 DME and hold.

MISSED APCH FIX

TACKE
TTT [26.5]

113.1 TTT
Chan 78

R-127

ALTERNATE MISSED APCH FIX

TACKE
FUZ [32.7]

115.7 FUZ
Chan 104

R-120

RADAR REQUIRED

(IF)
RIVET
I-PPZ [19.6]
RADAR

DRAAK
I-PPZ [16.4]
RADAR

INWOD
I-PPZ [10.1]
RADAR

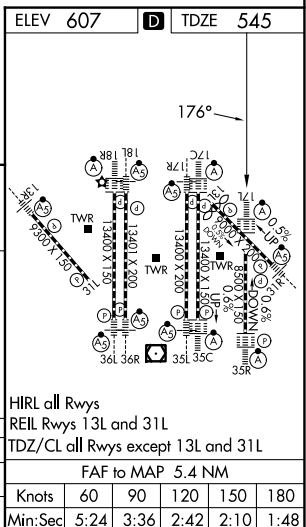
GBUSH
I-PPZ [7]
RADAR

LOCALIZER 111.75
I-PPZ []
Chan 54(Y)

MAVERICK
113.1 TTT []
Chan 78

ELEV 607 D TDZE 545

176°



SC-2, 10 JUL 2025 to 07 AUG 2025