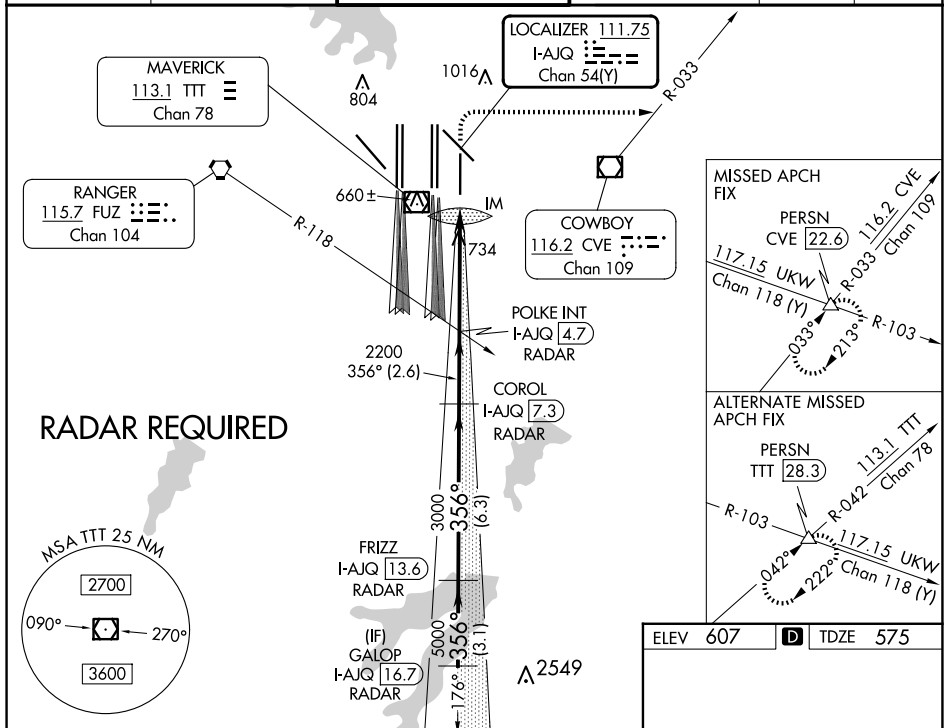


**ILS RWY 35R (CAT II & III)**  
DALLAS-FORT WORTH INTL (DFW)

ALSF-2

**MISSED APPROACH:** Climb to 1040 then climbing right turn to 3000 on heading 090° and CVE VOR/DME R-033 to PERSN/CVE 22.6 DME and hold

D-ATIS	LONE STAR APP CON	DFW TOWER	GND CON	CLNC DEL	CPDLC
ARR <b>123.775</b>		<b>126.55</b> <b>127.5</b> EAST	<b>121.65</b> <b>121.8</b> EAST		
DEP <b>135.925</b>	<b>119.4</b>	<b>124.15</b> <b>134.9</b> WEST	<b>121.85</b> WEST	<b>128.25</b>	



GALOP I-AJQ 16.7 RADAR  
FRIZZ I-AJQ 13.6 RADAR  
COROL I-AJQ 7.3 RADAR  
POLKE INT I-AJQ 4.7 RADAR

1040 3000 CVE R-033 PERSN △

5000 — 356°  
5000 3000 2200 2200

GS 3.00° TCH 58° IM 671

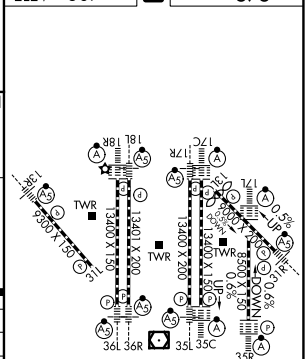
VGSI and ILS glidepath not coincident  
(VGSI Angle 3.00/TCH 73).

3.1 NM 6.3 NM 2.6 NM 4.9 NM 1375'

CATEGORY	A	B	C	D
S-ILS 35R	CAT II RA 94/12 100 DA 675			
S-ILS 35R		CAT IIIa RVR 07		
S-ILS 35R		CAT IIIb RVR 06		
S-ILS 35A		CAT IIIc NA		

CATEGORY II & III ILS - SPECIAL AIRCREW  
& AIRCRAFT CERTIFICATION REQUIRED

ELEV 607	<b>D</b>	TDZE 575
----------	----------	----------



HIRL all Rws  
REIL Rws 13L and 31L  
TDZ/CL all Rws except 13L and 31L

SC-2, 10 JUL 2025 to 07 AUG 2025