
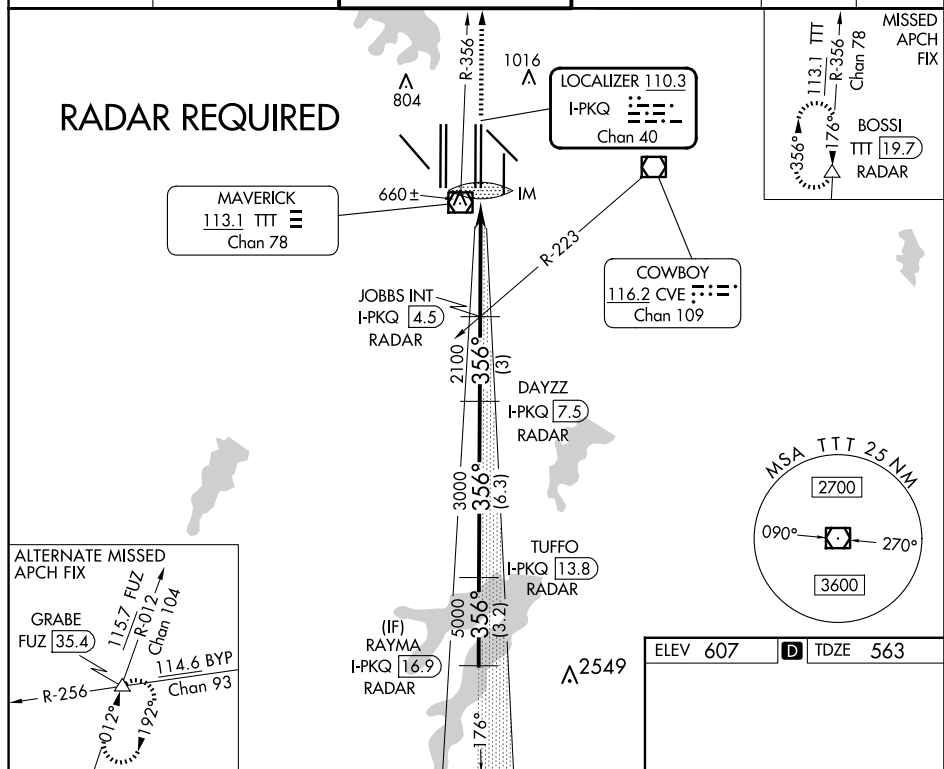


LOC/DME I-PKQ 110.3 Chan 40	APP CRS 356°	Rwy Ldg TDZE Apt Elev	13400 563 607
--	------------------------	-----------------------------	--

ILS RWY 35C (SA CAT I)
DALLAS-FORT WORTH INTL (DFW)

▼ DME or RADAR required. Simultaneous approach authorized with Rwy 35R, Rwy 36L/R. Requires specific OPSPEC, MSPEC, or LOA approval and use of HUD to DA.	ALSF-2 		MISSED APPROACH: Climb to 3000 on TTT VOR/DME R-356 to BOSSI/TTT 19.7 DME/RADAR and hold.			
	D-ATIS ARR 123.775 DEP 135.925	LONE STAR APP CON 127.075	DFW TOWER 126.55 127.5 EAST 124.15 134.9 WEST	GND CON 121.65 121.8 EAST 121.85 WEST	CLNC DEL 128.25	CPDLC



3000 ↑ TTT R-356	BOSSI △	VGS1 and ILS glidepath not coincident (VGS1 Angle 3.00/TCH 76).				RAYMA I-PKQ <u>16.9</u>
		JOBBS INT I-PKQ <u>4.5</u> RADAR	DAYZZ I-PKQ <u>7.5</u> RADAR	TUFFO I-PKQ <u>13.8</u> RADAR		
IM		356°				6000
2100		2100	3000	5000		GS 3.00° TCH 59
1050	4.6 NM	3 NM	6.3 NM	3.2 NM		
CATEGORY	A	B	C	D		
S-ILS 35C	RA 153/14 150 DA 713					

