

LOC/DME I-PKQ 110.3 Chan 40	APP CRS 356°	Rwy Ldg TDZE Apt Elev 13400 563 607	ILS RWY 35C (CAT II & III) DALLAS-FORT WORTH INTL (DFW)
---	------------------------	---	---

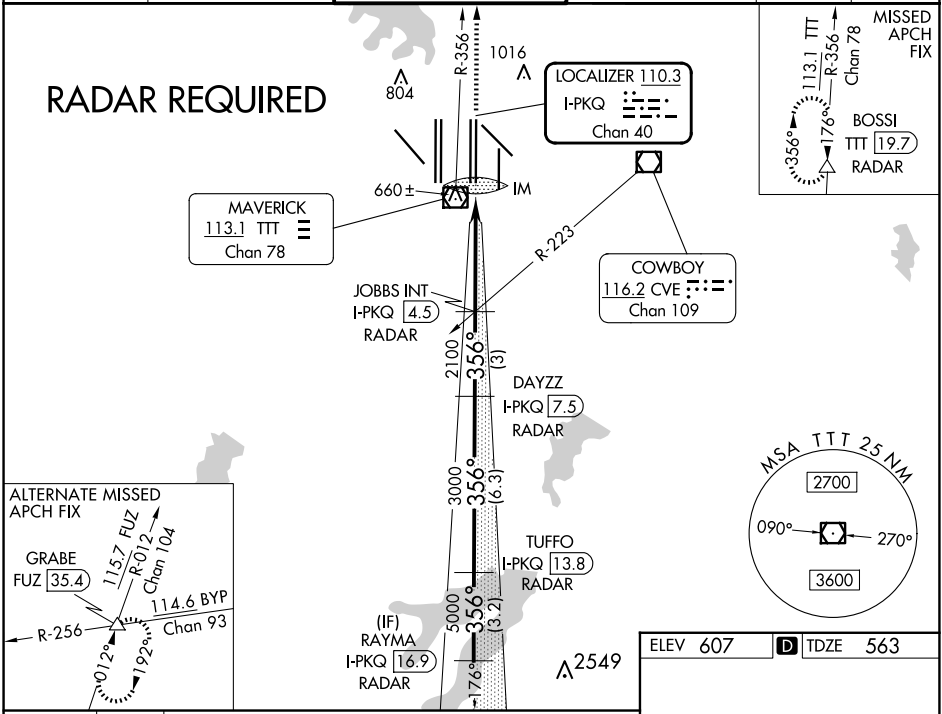
▼

DME or RADAR required.
Simultaneous approach authorized with Rwy 35R, Rwy 36L/R.

ALSF-2

MISSED APPROACH: Climb to 3000 on TTT VOR/DME R-356 to BOSSI/TTT 19.7 DME/RADAR and hold.

D-ATIS ARR 123.775 DEP 135.925	LONE STAR APP CON 127.075	DFW TOWER 126.55 127.5 EAST 124.15 134.9 WEST	GND CON 121.65 121.8 EAST 121.85 WEST	CLNC DEL 128.25	CPDLC
--	-------------------------------------	---	---	---------------------------	-------



3000	BOSSI	VGSI and ILS glidepath not coincident (VGSI Angle 3.00/TCH 76).				RAYMA I-PKQ 16.9
TTT R-356	△	JOBBS INT I-PKQ 4.5	DAYZZ I-PKQ 7.5	TUFFO I-PKQ 13.8		RADAR
IM 663		2100	3000	5000	6000	
1050	4.6 NM	3 NM	6.3 NM	3.2 NM		
CATEGORY	A	B	C	D		
S-ILS 35C	CAT II RA 100/12 100 DA 663					
S-ILS 35C	CAT IIIa RVR 07					
S-ILS 35C	CAT IIIb RVR 06					
S-ILS 35C	CAT IIIc NA					

CATEGORY II & III ILS - SPECIAL AIRCREW & AIRCRAFT CERTIFICATION REQUIRED

HIRL all Rwys
REIL Rwys 13L and 31L
TDZ/CL all Rwys except 13L and 31L