

| | | | |
|---------------|---------|----------|------|
| LOC/DME I-RRR | APP CRS | Rwy Ldg | 8373 |
| 110.9 | 311° | TDZE | 523 |
| Chan 46 | | Apt Elev | 607 |

ILS RWY 31R (SA CAT I & CAT II)

DALLAS-FORT WORTH INTL (DFW)

Simultaneous approach authorized. DME required.
SA Cat I: Requires specific OPSPEC, MSPEC, or LOA approval and use of HUD to DH. SA Cat II: Reduced lighting: Requires specific OPSPEC, MSPEC, or LOA approval and use of autoland or HUD to touchdown.

MALSR

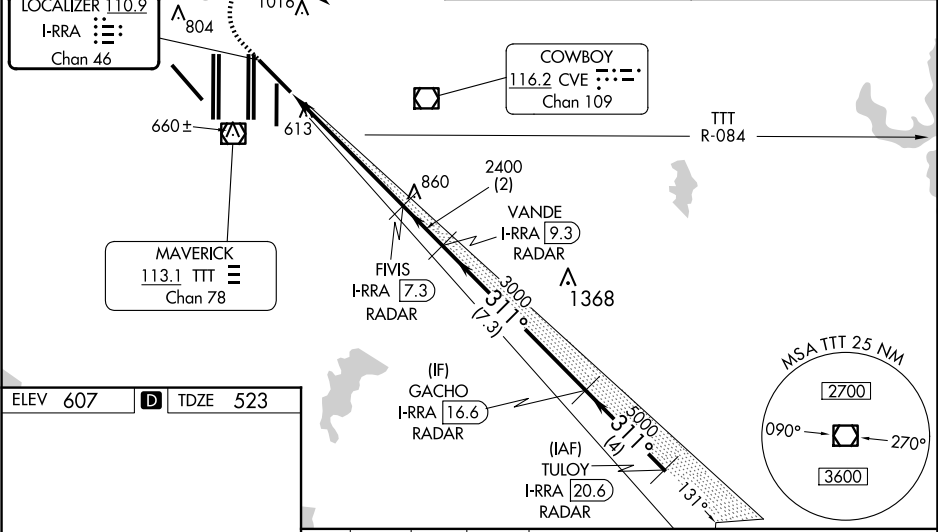
MISSED APPROACH: Climb to 1100 then climbing right turn to 3000 on heading 125° and TTT VOR/DME R-084 to SOLDLO/TTT 35.8 DME and hold.

| | | | | | |
|-------------|-------------------|--|----------------------------------|----------|-------|
| D-ATIS | LONE STAR APP CON | DFW TOWER | GND CON | CLNC DEL | CPDLC |
| ARR 123.775 | 135.5 125.2 | 126.55 127.5 EAST 124.15 134.9 WEST | 121.65 121.8 EAST 121.85 WEST | 128.25 | |
| DEP 135.925 | | | | | |

RADAR REQUIRED

ALTERNATE MISSED APCH FIX

MISSED APCH FIX



ELEV 607 D TDZE 523

HIRL all Rwys

REIL Rwys 13L and 31L

TDZ/CL all Rwys except 13L and 31L

Diagram of taxiway and runway layout.

1100 3000 TTT R-084 SOLDLO

Diagram of approach path with altitudes and distances.

| CATEGORY | A | B | C | D |
|-----------|-----------|----------------------|---|---|
| S-ILS 31R | SA CAT I | RA 176/14 150 DA 673 | | |
| S-ILS 31R | SA CAT II | RA 121/12 100 DA 623 | | |

SA CATEGORY I & II ILS SPECIAL AIRCREW & AIRCRAFT CERTIFICATION REQUIRED