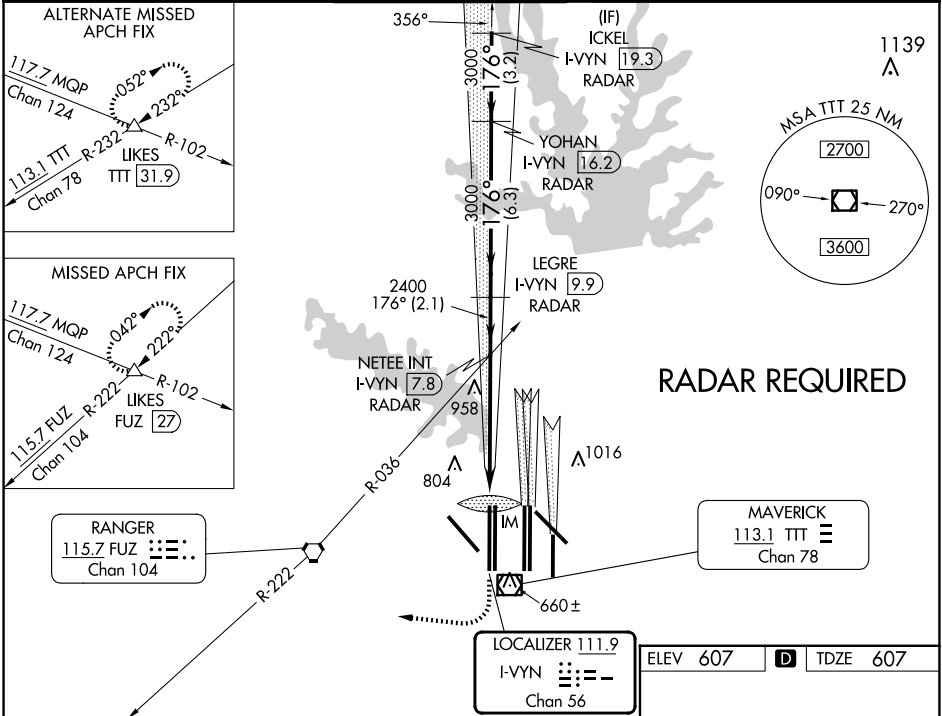


LOC/DME I-VYIN	APP CRS	Rwy Ldg	13400
111.9	176°	TDZE	607
Chan 56		Apt Elev	607

ILS RWY 18R (CAT II & III)

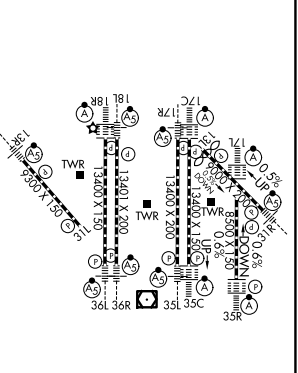
DALLAS-FORT WORTH INTL (DFW)

<div><div><div>T</div><div>A</div></div></div>	DME or RADAR required. Simultaneous approach authorized with Rwy 17 L/C/R.		ALSIF-2		MISSED APPROACH: Climb to 1100 then climbing right turn to 3000 on heading 250° and FUZ VORTAC R-222 to LIKES INT/FUZ VORTAC 27 DME and hold.				
			<div><div><div>A</div><div>ALSIF-2</div></div></div>						
D-ATIS		LONE STAR APP CON		DFW TOWER		GND CON		CLNC DEL	CPDLC
ARR 123.775		118.425		126.55 127.5 EAST		121.65 121.8 EAST		128.25	
DEP 135.925				124.15 134.9 WEST		121.85 WEST			



1100	3000	FUZ R-222	LIKES
↑	hdg 250°	△	
VGSI and ILS glidepath not coincident (VGSI Angle 3.00°/TCH 74).			
IM	701	2400	3000
1160°	5.5 NM	2.1 NM	6.3 NM
CATEGORY	A	B	C
S-ILS 18R	CAT II	RA 106/12	100 DA 707
S-ILS 18R		CAT IIIa	RVR 07
S-ILS 18R		CAT IIIb	RVR 06
S-ILS 18R		CAT IIIc	NA

CATEGORY II & III ILS - SPECIAL AIRCREW & AIRCRAFT CERTIFICATION REQUIRED



HIRL all Rwys
REIL Rwy 13L and 31L
TDZ/CL all Rwy except 13L and 31L