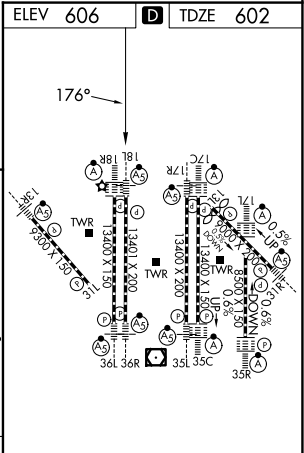
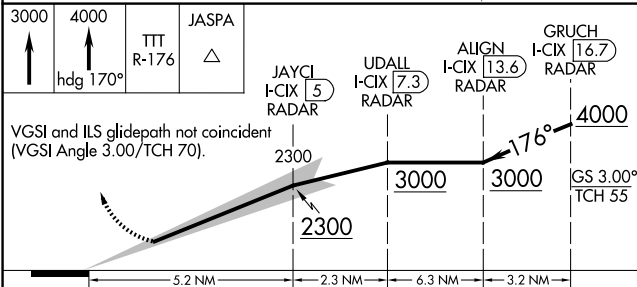
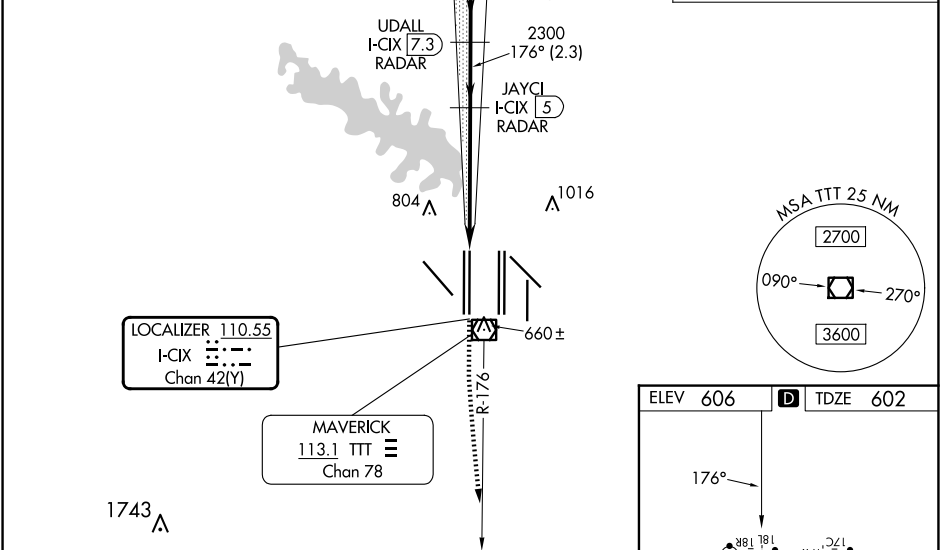
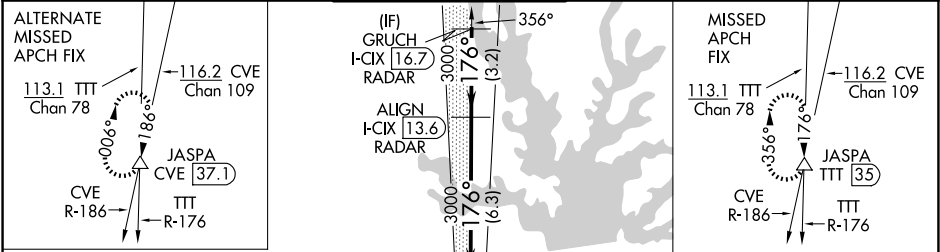


LOC/DME I-CIX	APP CRS	Rwy Ldg
110.55	176°	13401
Chan 42 (Y)		TDZE 602
		Apt Elev 606

ILS RWY 18L (CONVERGING)
DALLAS-FORT WORTH INTL (DFW)

DME and RADAR required.	MALSR	MISSED APPROACH: Climb to 3000, then climb to 4000 on heading 170° and TTT VOR/DME R-176 to JASPA/TTT 35 DME and hold.
Simultaneous approach authorized with CONVERGING ILS RWY 13R.		

D-ATIS ARR 123.775 DEP 135.925	LONE STAR APP CON 118.425	DFW TOWER 126.55 127.5 EAST 124.15 134.9 WEST	GND CON 121.65 121.8 EAST 121.85 WEST	CLNC DEL 128.25	CPDLC
--	-------------------------------------	---	---	---------------------------	-------



CATEGORY	A	B	C	D
S-ILS 18L	802/18	200 (200-1/2)		

ILS RWY 18L (CONVERGING)

SC-2, 10 JUL 2025 to 07 AUG 2025

SC-2, 10 JUL 2025 to 07 AUG 2025