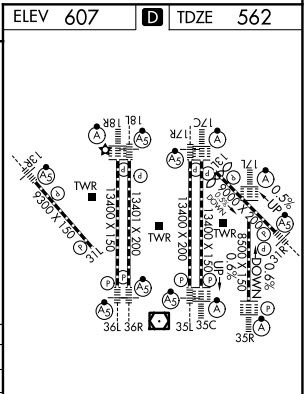
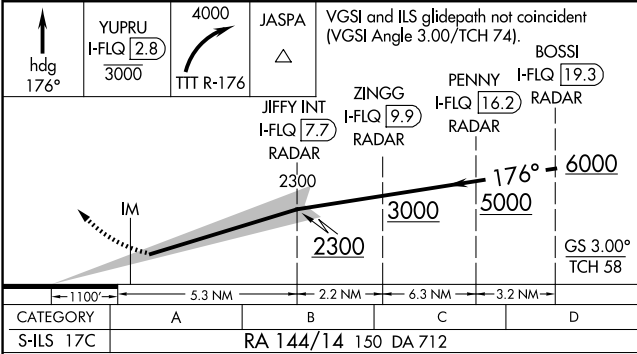
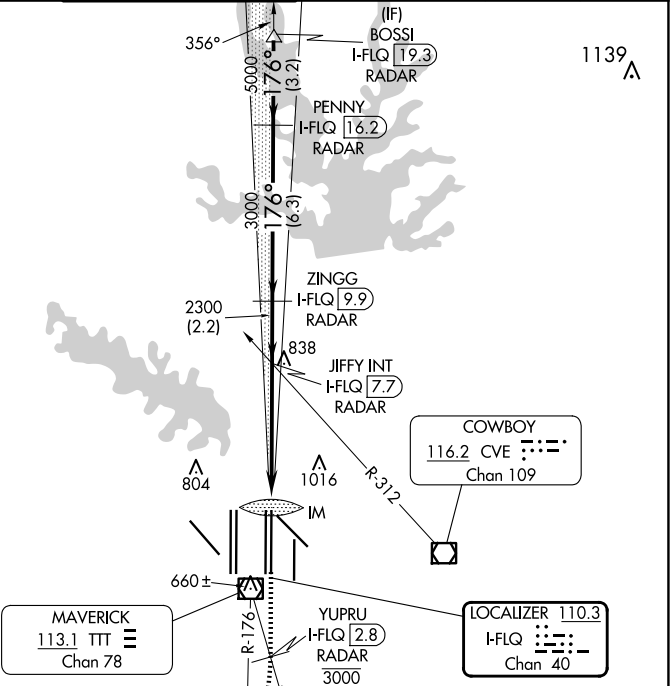
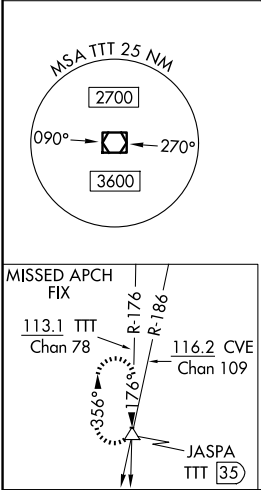
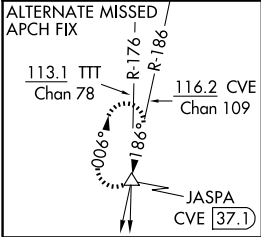


LOC/DME I-FLQ	APP CRS	Rwy Ldg	13400
<b>110.3</b>	<b>176°</b>	TDZE	<b>562</b>
Chan <b>40</b>		Apt Elev	<b>607</b>

ILS RWY 17C (SA CAT I)  
DALLAS-FORT WORTH INTL (DFW)

DME and RADAR required.		ALSF-2	MISSED APPROACH: Climb on heading 176° to cross YUPRU/2.8 DME/RADAR at or below 3000, then climbing right turn to 4000 on TTT VOR/DME R-176 to JASPA/TTT 35 DME and hold.		
Simultaneous approach authorized with Rwy 17L, 18L/R. Requires specific OPSPEC, MSPEC, or LOA approval and use of HUD to DA.					
D-ATIS ARR <b>123.775</b> DEP <b>135.925</b>	LONE STAR APP CON <b>127.075</b>	DFW TOWER <b>126.55 127.5</b> EAST <b>124.15 134.9</b> WEST	GND CON <b>121.65 121.8</b> EAST <b>121.85</b> WEST	CINC DEL <b>128.25</b>	CPDLC



SA CATEGORY I ILS - SPECIAL AIRCREW  
& AIRCRAFT CERTIFICATION REQUIRED

HIRL all Rwy's  
REIL Rwy's 13L and 31L  
TDZ/CI all Rwy's except 13L and 31L