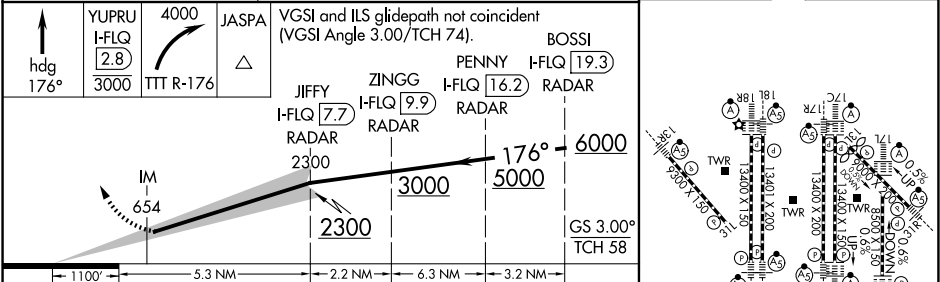
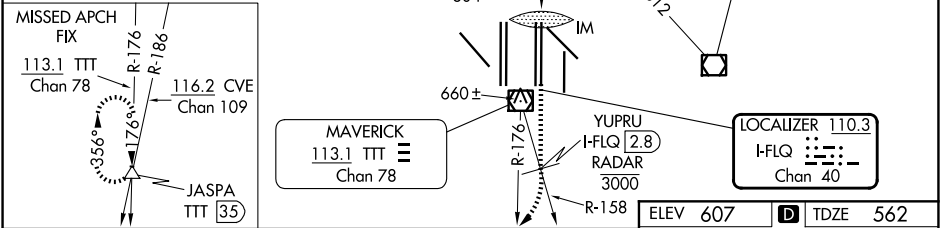
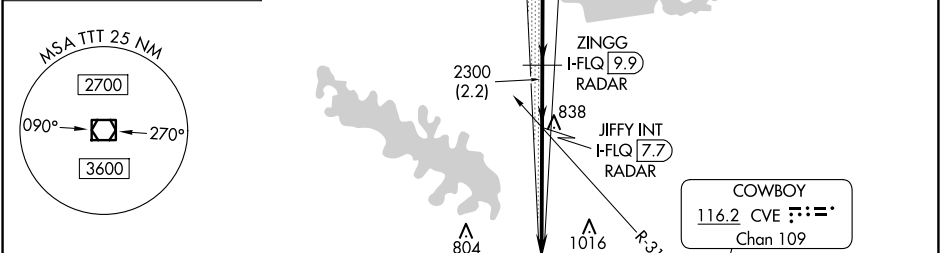
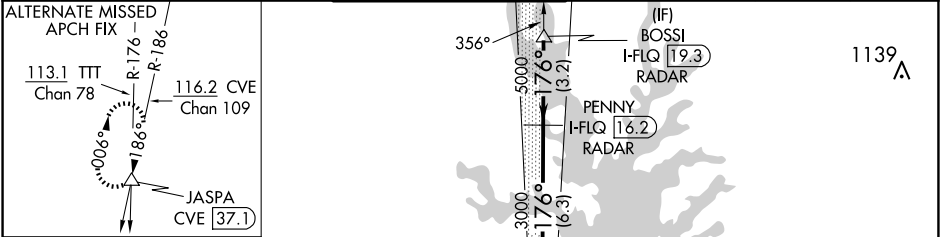


| | | | | |
|---|------------------------|---|--|--|
| LOC/DME I-FLQ 110.3 Chan 40 | APP CRS 176° | Rwy Ldg TDZE 562 Apt Elev 607 | ILS RWY 17C (CAT II & III) DALLAS-FORT WORTH INTL (DFW) | |
|---|------------------------|---|--|--|

| | | | | |
|---|--|--------|---|--|
| DME and RADAR required. | | ALSF-2 | MISSED APPROACH: Climb on heading 176° to cross YUPRU/2.8 DME/RADAR at or below 3000, then climbing right turn to 4000 on TTT VOR/DME R-176 to JASPA/TTT 35 DME and hold. | |
| Simultaneous approach authorized with Rwy 17L, 18L/R. | | | | |

| | | | | | |
|--|-------------------------------------|---|---|---------------------------|-------|
| D-ATIS ARR 123.775 DEP 135.925 | LONE STAR APP CON 127.075 | DFW TOWER 126.55 127.5 EAST 124.15 134.9 WEST | GND CON 121.65 121.8 EAST 121.85 WEST | CLNC DEL 128.25 | CPDLC |
|--|-------------------------------------|---|---|---------------------------|-------|



| | | | | |
|-----------|-----------------------------|---|---|---|
| CATEGORY | A | B | C | D |
| S-ILS 17C | CAT II RA 102/12 100 DA 662 | | | |
| S-ILS 17C | CAT III RVR 06 | | | |

CATEGORY II & III ILS - SPECIAL AIRCREW & AIRCRAFT CERTIFICATION REQUIRED

HIRL all Rwy's
REIL Rwy's 13L and 31L
TDZ/CI all Rwy's except 13L and 31L