

DALLAS-FORT WORTH INTL (DFW)  
DALLAS-FORT WORTH, TEXAS

GRABE EIGHT DEPARTURE (RNAV)

**TOP ALTITUDE:**  
RWYS 31L/R: 5000  
RWYS 17C/R, 18L/R,  
35L/C, 36L/R: 10000

NOTE: EAKER Transition: For aircraft inbound to the Tulsa terminal area.

NOTE: OKMULGEE Transition: For all aircraft overflying the OKM VOR/DME proceeding via J181 to BDF VORTAC then to destinations in the Chicago terminal area and north.

NOTE: DME/DME/IRU or GPS required.

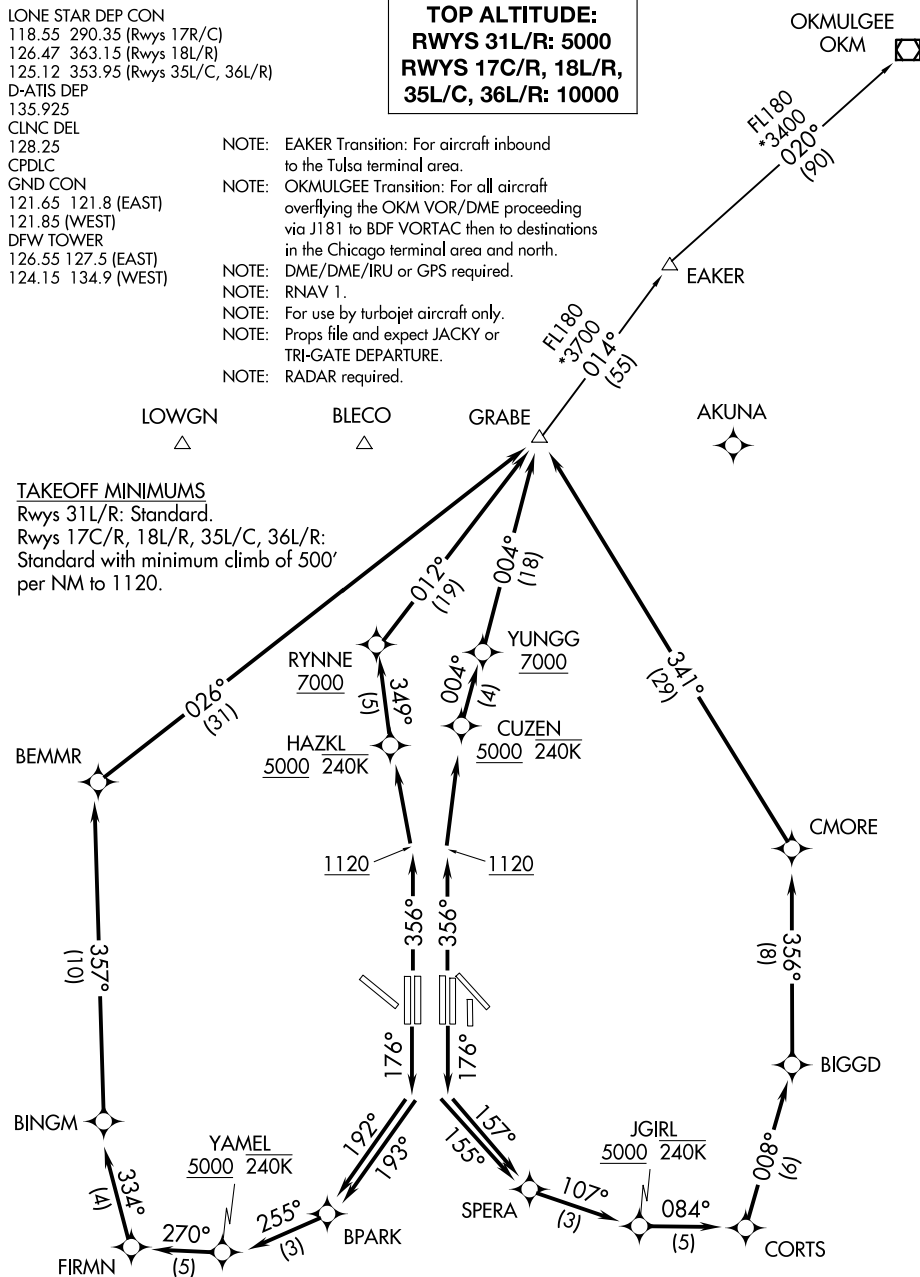
NOTE: RNAV 1.

NOTE: For use by turbojet aircraft only.

NOTE: Props file and expect JACKY or TRI-GATE DEPARTURE.

NOTE: RADAR required.

FL180  
\*3700  
-3700



(CONTINUED ON FOLLOWING PAGE)

NOTE: Chart not to scale.

## GRABE EIGHT DEPARTURE (RNAV)

(GRABE8.GRABE) 29MAR18

DALLAS-FORT WORTH, TEXAS  
DALLAS-FORT WORTH INTL (DFW)

SC-2, 10 JUL 2025 to 07 AUG 2025