

DALLAS-FORT WORTH, TEXAS




AL-6039 (FAA)

25163

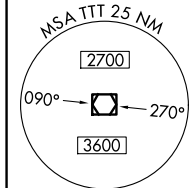
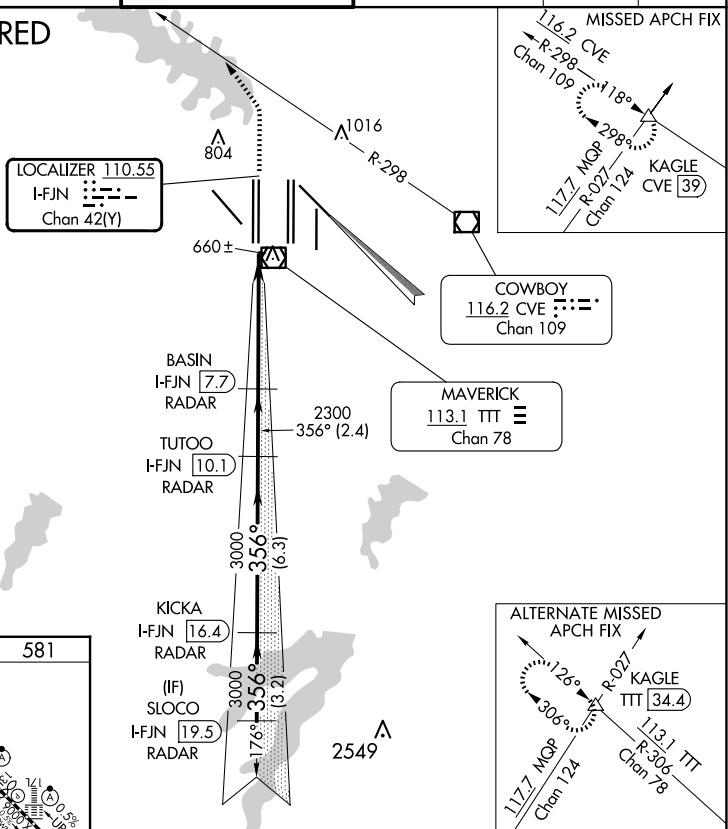
LOC/DME I-FJN <b>110.55</b> Chan <b>42</b> (Y)	APP CRS <b>356°</b>	Rwy Ldg TDZE Apt Elev	<b>13401</b> <b>581</b> <b>607</b>
--	------------------------	-----------------------------	--

## CONVERGING ILS RWY 36R

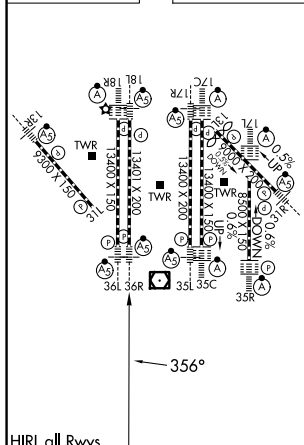
DALLAS-FORT WORTH INTL (DFW)

 Simultaneous approach authorized with Converging ILS Rwy 31R. DME or Radar required.		 		MISSED APPROACH: Climb to 1100, then climbing left turn to 3000 on heading 320° and CVE VOR/DME R-298 to KAGLE INT/CVE 39 DME and hold.			
D-ATIS ARR <b>123.775</b> DEP <b>135.925</b>	LONE STAR APP CON <b>118.425</b>	DFW TOWER <b>126.55 127.5</b> EAST <b>124.15 134.9</b> WEST		GND CON <b>121.65 121.8</b> EAST <b>121.85</b> WEST		CLNC DEL <b>128.25</b>	CPDLC

## RADAR REQUIRED



ELEV 607	<b>D</b>	TDZE 581
----------	----------	----------



HIRL all Rwy's  
REIL Rwy's 13L and 31L  
TDZ/CL all Rwy's except 13L and 31L

1100 ↑	3000 hdg 320°	CVE R-298	KAGLE △	BASIN I-FJN 7.7 RADAR	TUTOO I-FJN 10.1 RADAR	KICKA I-FJN 16.4 RADAR	SLOCO I-FJN 19.5 RADAR
				2300 3000 3000 4000 GS 3.00° TCH 50			
CATEGORY	A		B		C		D
S-ILS 36R	781/18		200 (200-½)				

DALLAS-FORT WORTH, TEXAS

Amdt 3A 18SEP14

32°54'N-97°02'W

DALLAS-FORT WORTH INTL (DFW)

## CONVERGING ILS RWY 36R

SC-2, 10 JUL 2025 to 07 AUG 2025

SC-2, 10 JUL 2025 to 07 AUG 2025