

LOC/DME I-PKQ 110.3 Chan 40	APP CRS 356°	Rwy Ldg TDZE Apt Elev	13400 563 607
--	------------------------	-----------------------------	--

CONVERGING ILS RWY 35C

DALLAS-FORT WORTH INTL (DFW)

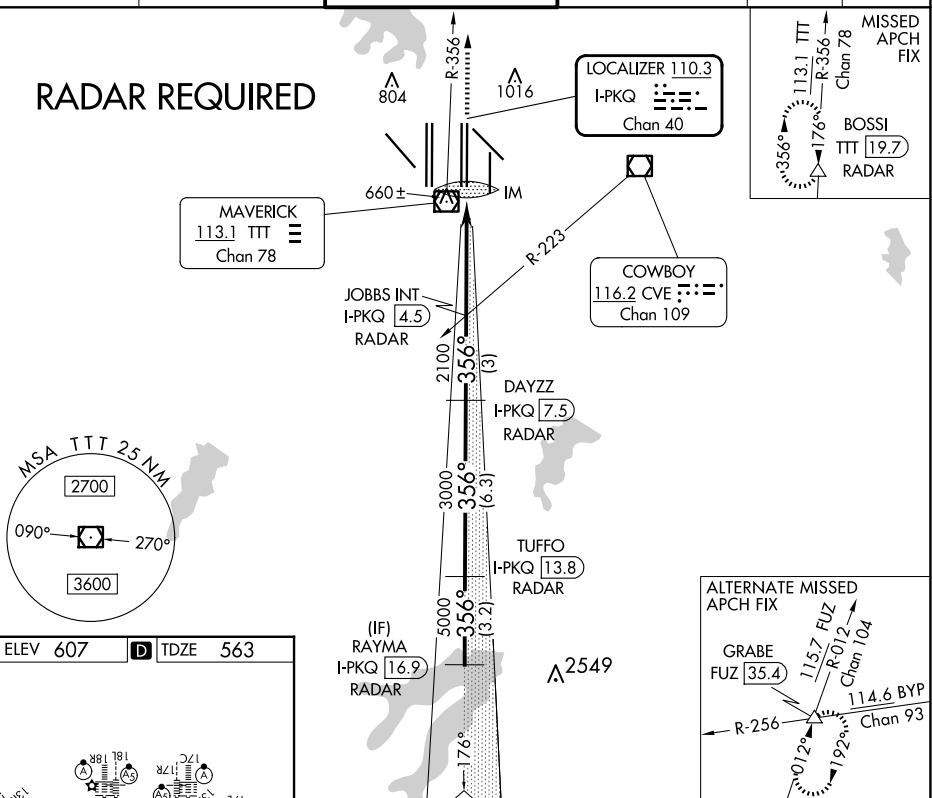
T DME or RADAR required.
Simultaneous approach authorized with Converging ILS Rwy 31R.

ALSF-2

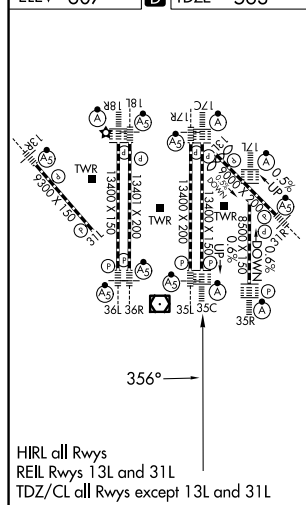
MISSED APPROACH: Climb to 3000 on TTT VOR/DME R-356 to BOSSI/TTT 19.7 DME/RADAR and hold.

D-ATIS	LONE STAR APP CON	DFW TOWER	GND CON	CLNC DEL	CPDLC
ARR 123.775		126.55 127.5 EAST	121.65 121.8 EAST		
DEP 135.925	127.075	124.15 134.9 WEST	121.85 WEST	128.25	

RADAR REQUIRED



ELEV 607		TDZE 563
----------	---	----------



DALLAS-FORT WORTH, TEXAS

Amdt 3 18SEP14

32°54'N-97°02'W

DALLAS-FORT WORTH INTL (DFW)

CONVERGING ILS RWY 35C

SC-2, 10 JUL 2025 to 07 AUG 2025