

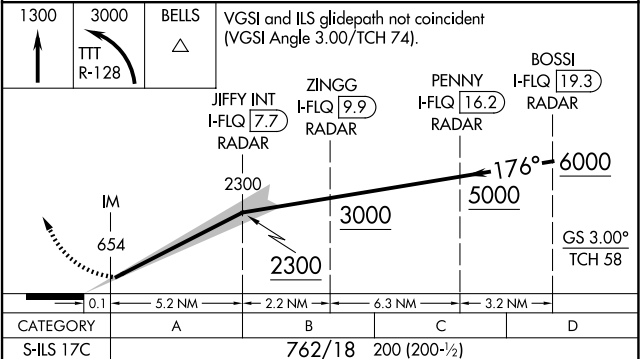
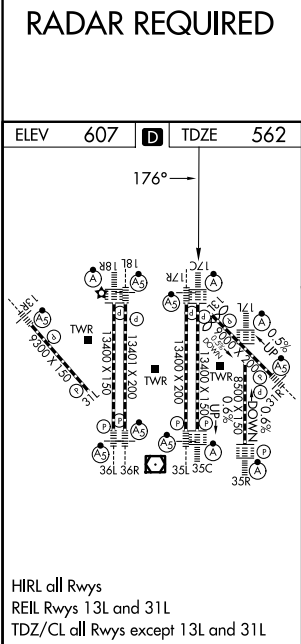
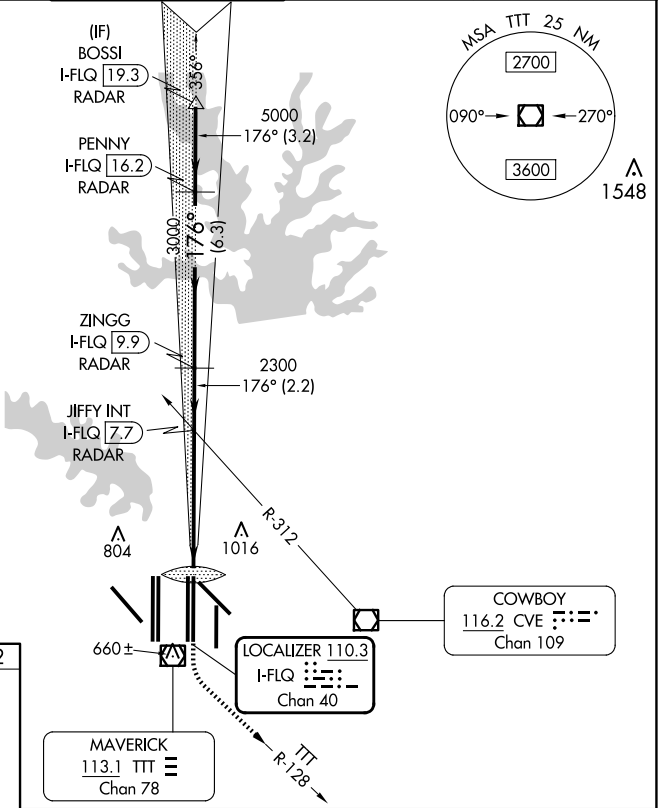
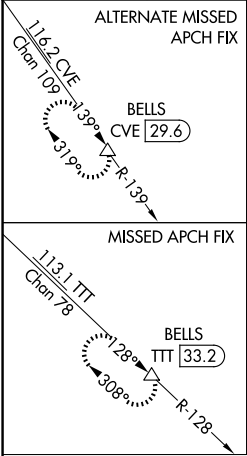
LOC/DME I-FLQ	APP CRS	Rwy Ldg
110.3	176°	13400
Chan 40		TDZE 562
		Apt Elev 607

CONVERGING ILS RWY 17C

DALLAS-FORT WORTH INTL (DFW)

DME or RADAR required. Simultaneous approach authorized with Converging ILS Rwy 13R.		ALSF-2	MISSED APPROACH: Climb to 1300 then climbing left turn to 3000 on TTT VOR/DME R-128 to BELLS/TTT 33.2 DME and hold.	
---	--	--------	---	--

D-ATIS	LONE STAR APP CON	DFW TOWER	GND CON	CLNC DEL	CPDLC
ARR 123.775	127.075	126.55 127.5 EAST	121.65 121.8 EAST	128.25	
DEP 135.925		124.15 134.9 WEST	121.85 WEST		



SC-2, 10 JUL 2025 to 07 AUG 2025

SC-2, 10 JUL 2025 to 07 AUG 2025