

WAAS CH 77642 W09A	APP CRS 092°	Rwy Idg TDZE 1007 Apt Elev 1007
--	------------------------	---

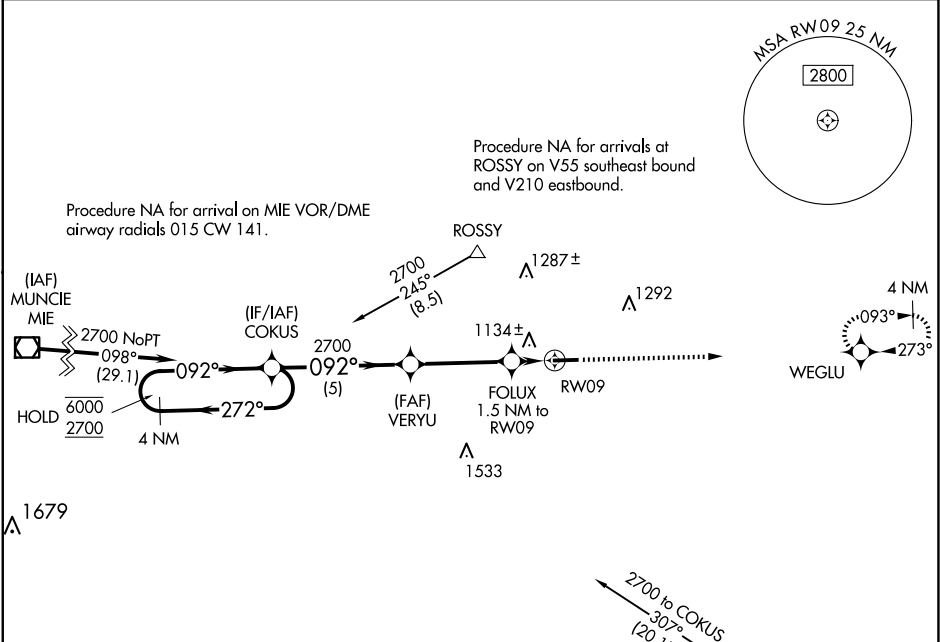
RNAV (GPS) RWY 9
DARKE COUNTY (VES)

RNP APCH - GPS.

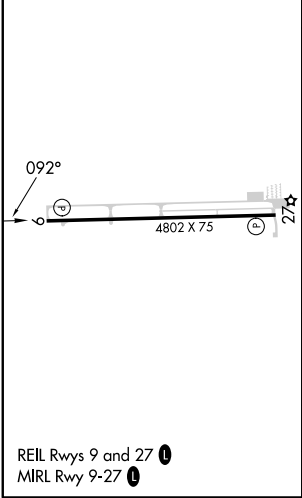
⚠ Circling Rwy 27 NA at night. Rwy 9 helicopter visibility reduction below $\frac{3}{4}$ SM NA.
For uncompensated Baro-VNAV systems, LNAV/VNAV NA below -16° C or above 54° C.

MISSED APPROACH:
Climb to 2700 direct
WEGLU and hold.

AWOS-3PT 125.9	COLUMBUS APP CON 134.45 352.05	UNICOM 122.8 (CTAF) 0
--------------------------	--	---------------------------------



ELEV 1007	TDZE 1007
-----------	-----------



Procedure NA for arrival on DQN VOR/DME airway radials 234 CW 008.			
4 NM Holding Pattern			
VGSi and RNAV glidepath not coincident (VGSi Angle 3.00/TCH 38).			
COKUS			
VERYU			
FOLUX 1.5 NM to RWY 9			
RWY 9			
GP 3.00° TCH 44			
*1540			
5 NM 3.6 NM 1.5 NM			
CATEGORY	A	B	C
LPV DA	1257-1	250 (300-1)	NA
LNAV/VNAV DA	1400-1 $\frac{1}{8}$	393 (400-1 $\frac{1}{8}$)	NA
LNAV MDA	1400-1	393 (400-1)	1400-1 $\frac{1}{8}$ 393 (400-1 $\frac{1}{8}$)
CIRCLING	1440-1 433 (500-1)	1480-1 473 (500-1)	1660-1 $\frac{3}{4}$ 653 (700-1 $\frac{3}{4}$)