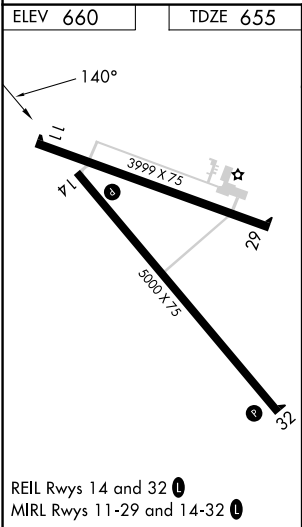
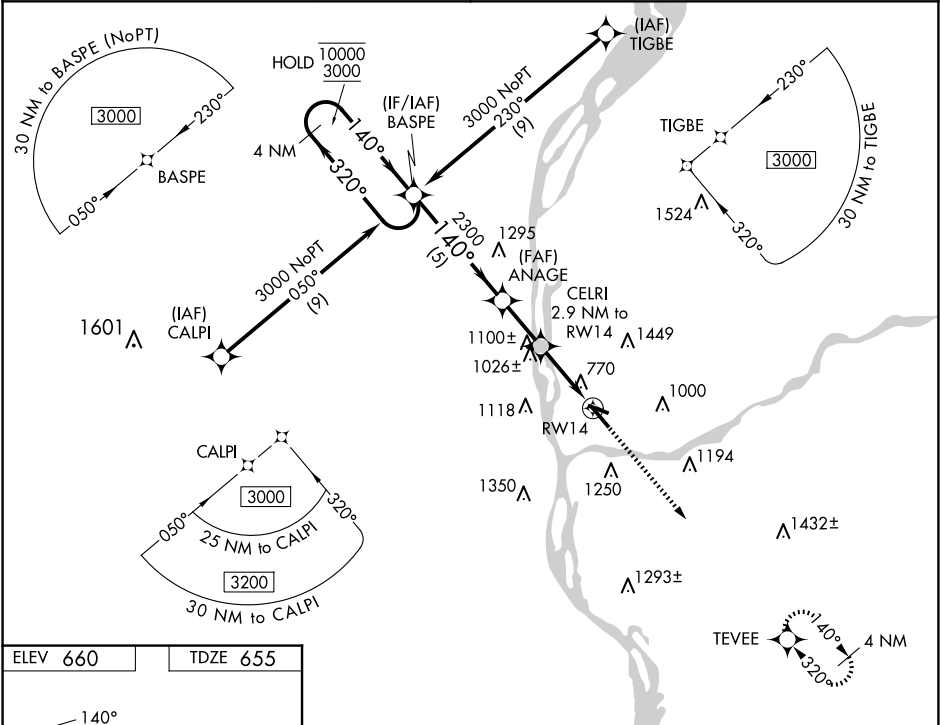


WAAS CH <b>48947</b> <b>W14A</b>	APP CRS <b>140°</b>	Rwy Ldg TDZE <b>655</b> Apt Elev <b>660</b>	<b>5000</b> <b>655</b> <b>660</b>
--	------------------------	---	---

RNAV (GPS) RWY 14

PRAIRIE DU CHIEN MUNI (PDC)

RNP APCH - GPS. ▼ For uncompensated Baro-VNAV systems, LNAV/VNAV NA below -16°C or above 54°C. Circling Rwy 32 NA at night. ▲		MISSED APPROACH: Climb to 3000 direct TEVEE and hold.
AWOS-3 <b>119.925</b>	CHICAGO CENTER <b>133.95 281.4</b>	UNICOM <b>122.8(CTAF) 0</b>



4 NM Holding Pattern		BASPE		VGSi and RNAV glidepath not coincident (VGSi Angle 3.00/TCH 28).		3000 ↑		TEVEE ✦	
10000 3000		←320° 140°→		ANAGE 2300		CELRI 2.9 NM to RW14		1.9 NM to RW14	
GP 3.00° TCH 45		2300		1620		RW14			
		5 NM		2.1 NM		1 NM		1.9	
CATEGORY		A		B		C		D	
LPV DA				983-1		328 (400-1)			
LNAV/ VNAV DA				1111-1⅜		456 (500-1⅜)			
LNAV MDA		1280-1		625 (700-1)		1280-1¾		625 (700-1¾)	
CIRCLING		1580-1¼ 920 (1000-1¼)		1760-1½ 1100 (1100-1½)		1760-3		1100 (1100-3)	