

WAAS CH <b>77610</b> <b>W16A</b>	APP CRS <b>165°</b>	Rwy Idg <b>5000</b> TDZE <b>885</b> Apt Elev <b>885</b>
--	------------------------	---

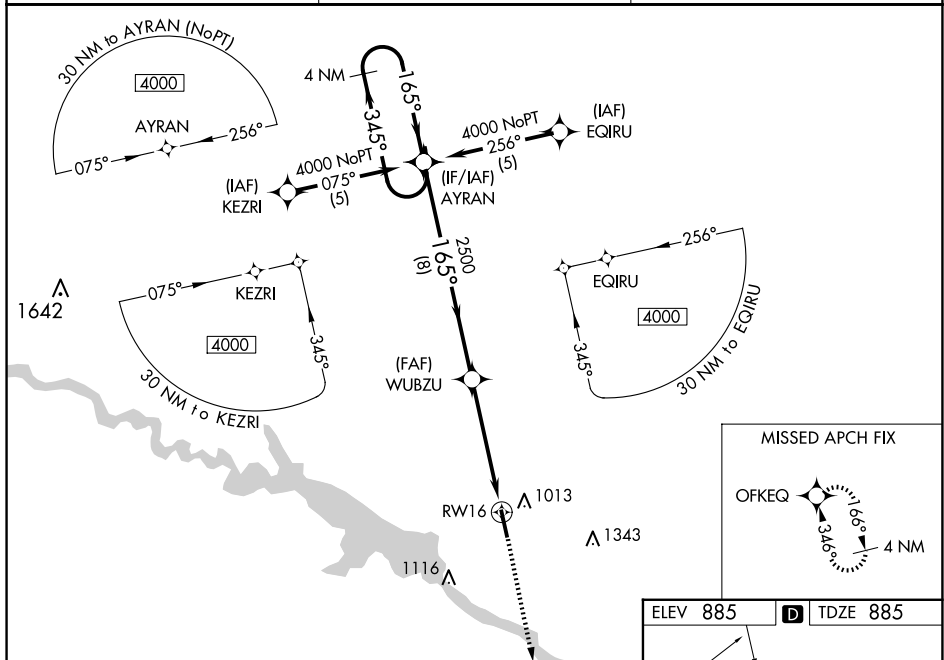
## RNAV (GPS) RWY 16

PELLA MUNI (PEA)

**T** DME/DME RNP -0.3 NA. Visibility reduction by helicopters NA. Baro-VNAV NA when using Knoxville altimeter setting. For uncompensated Baro-VNAV systems, LNAV/VNAV NA below -16°C (4°F) or above 54°C (130°F). When local altimeter setting not received, use Knoxville altimeter setting: increase LPV DA to 1261 feet; increase LNAV/VNAV DA to 1317 feet; increase all MDAs 40 feet and Circling visibility Cat C ¼ SM.

**MISSED APPROACH:** Climb to 3000 direct OFKEQ and hold.

AWOS-3 <b>118.875</b>	DES MOINES APP CON <b>123.9 307.15</b>	UNICOM <b>122.8 (CTAF) 0</b>
--------------------------	---	---------------------------------



VGSII and RNAV glidepath not coincident  
(VGSII Angle 3.30/TCH 26).

CATEGORY	A	B	C	D
LPV DA	1232-1¼	347 (400-1¼)		NA
LNAV/ VNAV DA	1288-1½	403 (500-1½)		NA
LNAV MDA	1360-1	475 (500-1)	1360-1¼ 475 (500-1¼)	NA
CIRCLING	1380-1 495 (500-1)	1420-1 535 (600-1)	1480-1½ 595 (600-1½)	NA

