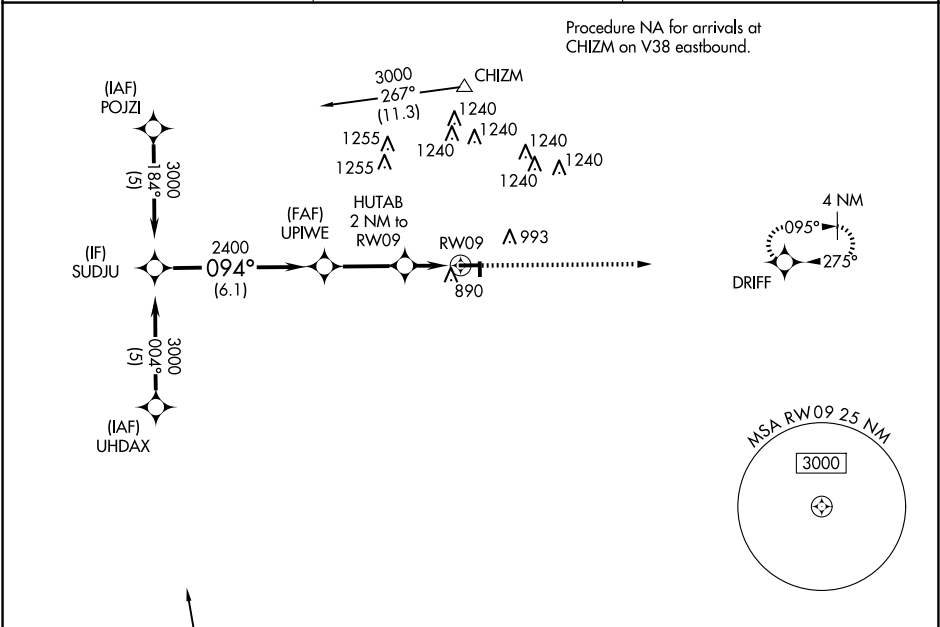


APP CRS	Rwy Idg	4000
094°	TDZE	784
	Apt Elev	787

RNAV (GPS) RWY 9

VAN WERT COUNTY (VNW)

RNP APCH - GPS.		MISSED APPROACH: Climb to 3000 direct DRIFT and hold.
<div><div>▼</div><div>▲</div></div> <div>Circling NA to Rwy 18 and 36. Circling Rwy 27 NA at night. Rwy 9 helicopter visibility reduction below ¾ SM NA.</div>	AWOS-3 125.175	FORT WAYNE APP CON 127.2 284.6
		UNICOM 123.0 (CTAF) 0



		ELEV 787		TDZE 784	
		Procedure NA for arrivals at BOOKS on V55 southeast bound and V14 southwest bound.			
SUDJU		UPIWE		HUTAB 2 NM to RW09	
3000		2400		1460	
094°		3.04° TCH 40		1 NM to RW09	
6.1 NM		2.9 NM		1 NM	
A		B		C	
LNAV MDA		1160-1 376 (400-1)		1160-1¼ 376 (400-1¼)	
CIRCLING		1340-1 553 (600-1)		1340-1½ 553 (600-1½)	
				1600-2¾ 813 (900-2¾)	
				MIRL Rwy 9-27 REIL Rwy 9 and 27	

EC-2, 10 JUL 2025 to 07 AUG 2025

EC-2, 10 JUL 2025 to 07 AUG 2025