

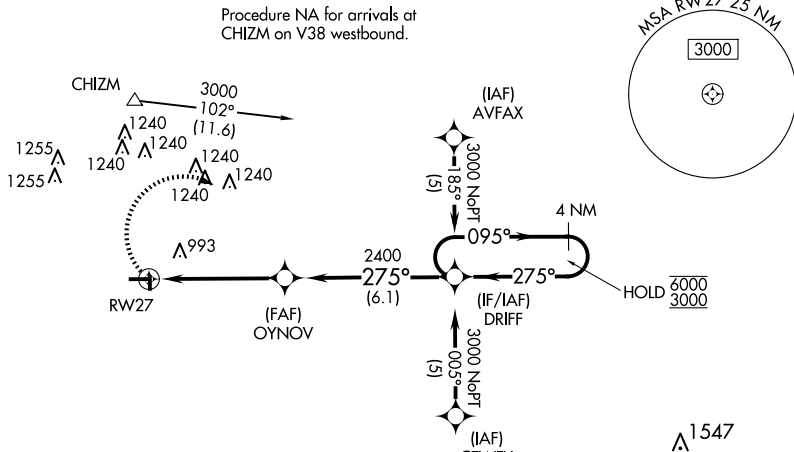
# RNAV (GPS) RWY 27

**T** Circling NA to Rwy 18 and 36. Procedure NA at night. Rwy 27 helicopter  
**A** visibility reduction below 1 SM NA.

**MISSED APPROACH:** Climbing right turn to 3000 direct DRIFF and hold.

FORT WAYNE APP CON  
127.2 284.6

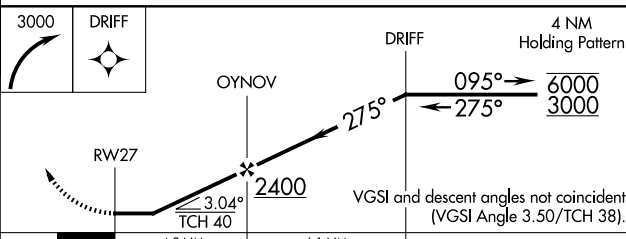
UNICOM  
123.0 (CTAF) **L**




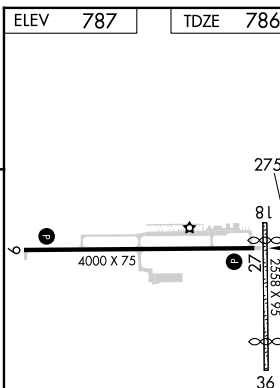
BOOKS

3000  
055°  
(25.9)

Procedure NA for arrivals at BOOKS  
on V14 southwest bound and  
V55 southeast bound.



CATEGORY	4.9 NM		6.1 NM	
	A	B	C	D
LNAV MDA	1280-1	494 (500-1)	1280-1 $\frac{3}{8}$ 494 (500-1 $\frac{1}{8}$ )	1280-1 $\frac{1}{2}$ 494 (500-1 $\frac{1}{2}$ )
 CIRCLING	1340-1	553 (600-1)	1340-1 $\frac{1}{2}$ 553 (600-1 $\frac{1}{2}$ )	1600-2 $\frac{3}{4}$ 813 (900-2 $\frac{3}{4}$ )



MIRL Rwy 9-27 **L**  
REIL Rwy 9 and 27 **L**