

SC-5, 10 JUL 2025 to 07 AUG 2025

HOUSTON DEP CON  
128.6 360.85

RNAV 1 - DME/DME/IRU or GPS.

RADAR required.

(MMALT7.MMALT) 233334

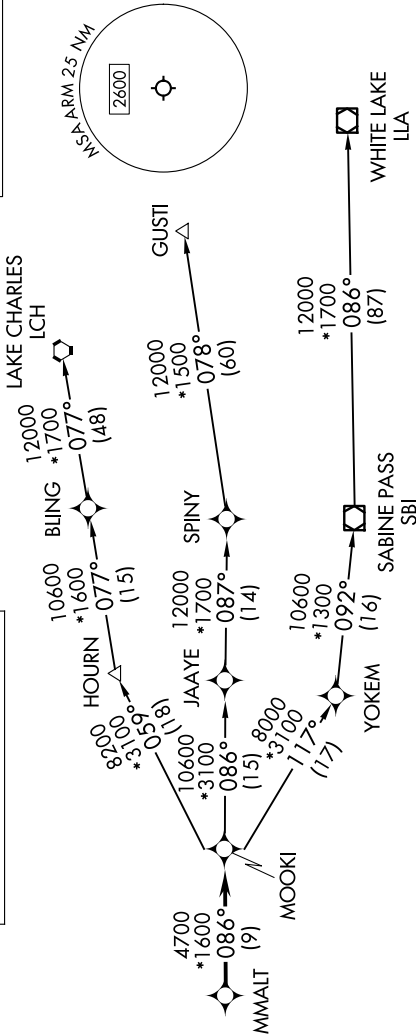
MMALT SEVEN DEPARTURE (RNAV)

AL-6032 (FAA)

WHARTON RGNL (ARM)

WHARTON, TEXAS

TOP ALTITUDE:  
ASSIGNED BY ATC



NOTE: GUSTI and LCH Transitions ATC assigned only for aircraft departing AXH, EFD, GLS, HPY, IWS, LBX, LVJ, SGR, TME, T00, T41 and 54T.

DEPARTURE ROUTE DESCRIPTION

**TAKEOFF RUNWAY 14:** Climb on heading 148° to 600, for RADAR vectors to MMALT, thence. . . .

**TAKEOFF RUNWAY 32:** Climb on heading 328° to 600, for RADAR vectors to MMALT, thence. . . .

. . . on track 086° to MOOKI, then on (transition). Maintain ATC assigned altitude.  
Expect filed altitude 10 minutes after departure.

GUSTI TRANSITION (MMALT7.GUSTI)  
LAKE CHARLES TRANSITION (MMALT7.LCH)  
WHITE LAKE TRANSITION (MMALT7.LLA)

**TAKEOFF MINIMUMS**  
Rwys 14, 32: Standard with minimum  
climb of 500' /NM to 600.

NOTE: Chart not to scale.

MMALT SEVEN DEPARTURE (RNAV)

(MMALT7.MMALT) 30NOV23

WHARTON, TEXAS

WHARTON RGNL (ARM)

SC-5, 10 JUL 2025 to 07 AUG 2025