

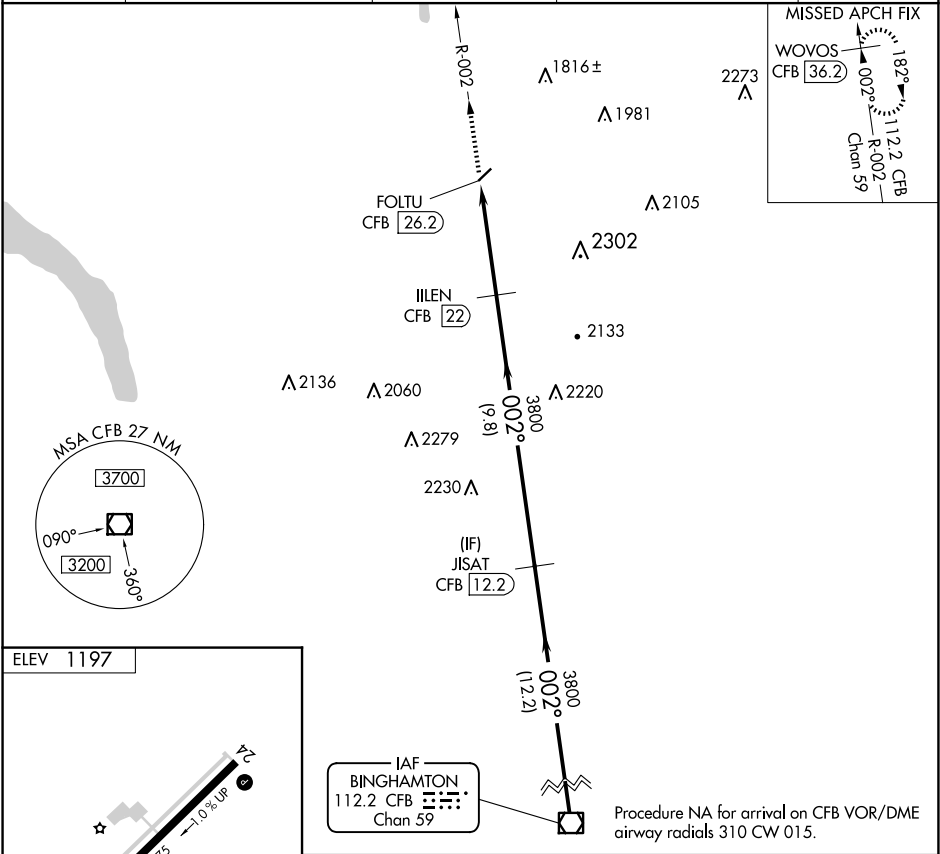
VOR/DME CFB	APP CRS	Rwy Idg	N/A
112.2	002°	TDZE	N/A
Chan 59		Apt Elev	1197

VOR-A

CORTLAND COUNTY/CHASE FLD (N03)

DME required.	MISSED APPROACH: Climb to 4000 on CFB VOR/DME R-002 to WOVOS/36.2 DME and hold.
---------------	---

AWOS-3 132.225	BINGHAMTON APP CON ★ 118.6 257.625 (S-SE)	ELMIRA APP CON ★ 124.3 257.8 (W)	SYRACUSE APP CON 126.125 269.125 (N)	UNICOM 122.8 (CTAF) 0
-------------------	--	-------------------------------------	---	--------------------------



3401 x 75

002°

4000

CFB R-002

WOVOS CFB

36.2

IILEN CFB

22

JISAT CFB

12.2

CFB VOR/DME

FOLTU CFB

26.2

3800

3800

002°

3800

4.2 NM

9.8 NM

12.2 NM

CATEGORY	A	B	C	D
<div> <div>2380-1¼</div> <div>1183 (1200-1¼)</div> </div> <div> <div>2380-1½</div> <div>1183 (1200-1½)</div> </div> <div> <div>2380-3</div> <div>1183 (1200-3)</div> </div> <div> <div>NA</div> </div>				

REIL Rwy 24

MIRL Rwy 6-24

CIRCLING

NE-2, 10 JUL 2025 to 07 AUG 2025

NE-2, 10 JUL 2025 to 07 AUG 2025