

APP CRS  
**059°**

Rwy Idg  
TDZE **1197**  
Apt Elev **1197**

**RNAV (GPS) RWY 6**

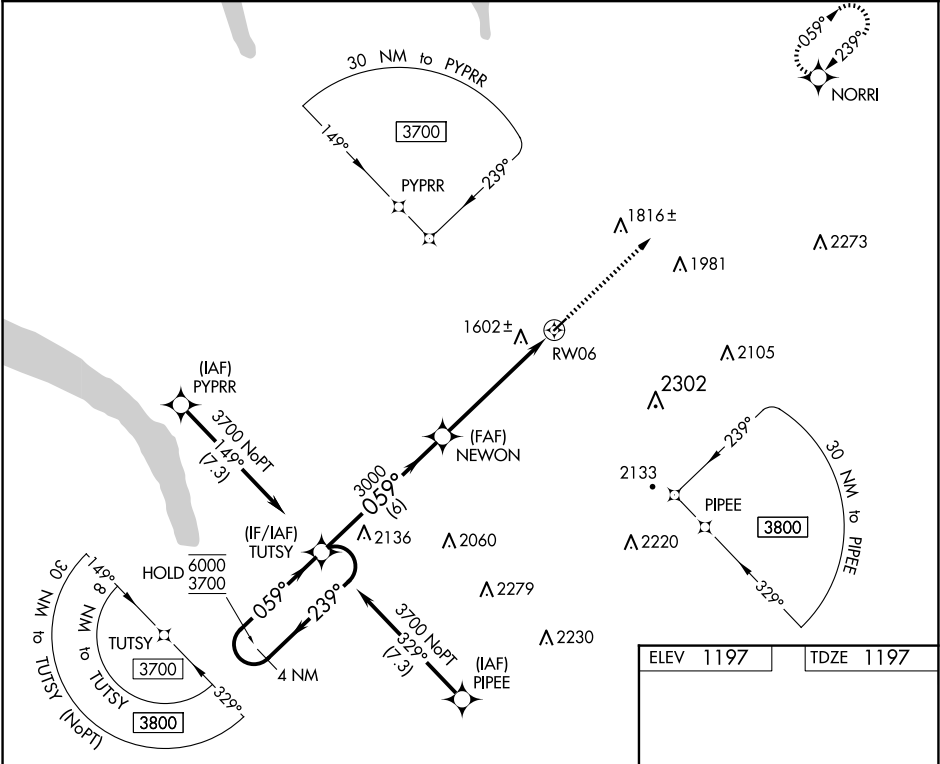
CORTLAND COUNTY/CHASE FLD (N03)

RNP APCH.

Rwy 6 helicopter visibility reduction below ¾ SM NA.

MISSED APPROACH: Climb to 3700 direct NORRI and hold.

AWOS-3 <b>132.225</b>	BINGHAMTON APP CON ★ <b>118.6 257.625 (S-SE)</b>	ELMIRA APP CON ★ <b>124.3 257.8 (W)</b>	SYRACUSE APP CON <b>126.125 269.125 (N)</b>	UNICOM <b>122.8 (CTAF)</b>
--------------------------	-----------------------------------------------------	--------------------------------------------	------------------------------------------------	-------------------------------



4 NM Holding Pattern

TUTSY

NEWON

VGSI and descent angles not coincident (VGSI Angle 4.00/TCH 40).

3700

NORRI

6000

3700

239°

059°

059°

3000

1.5 NM to RW06

3.00 NM to RW06

TCH 40

RW06

6 NM

4 NM

1.5

CATEGORY	A	B	C	D
LNVA MDA	1860-1	663 (700-1)	1860-1 7/8 663 (700-1 7/8)	NA
CIRCLING	1940-1 743 (800-1)	1980-1 783 (800-1)	2240-3 1043 (1100-3)	NA

REIL Rwy 24   
MIRL Rwy 6-24