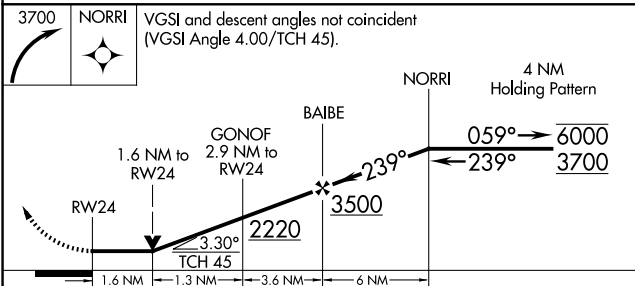
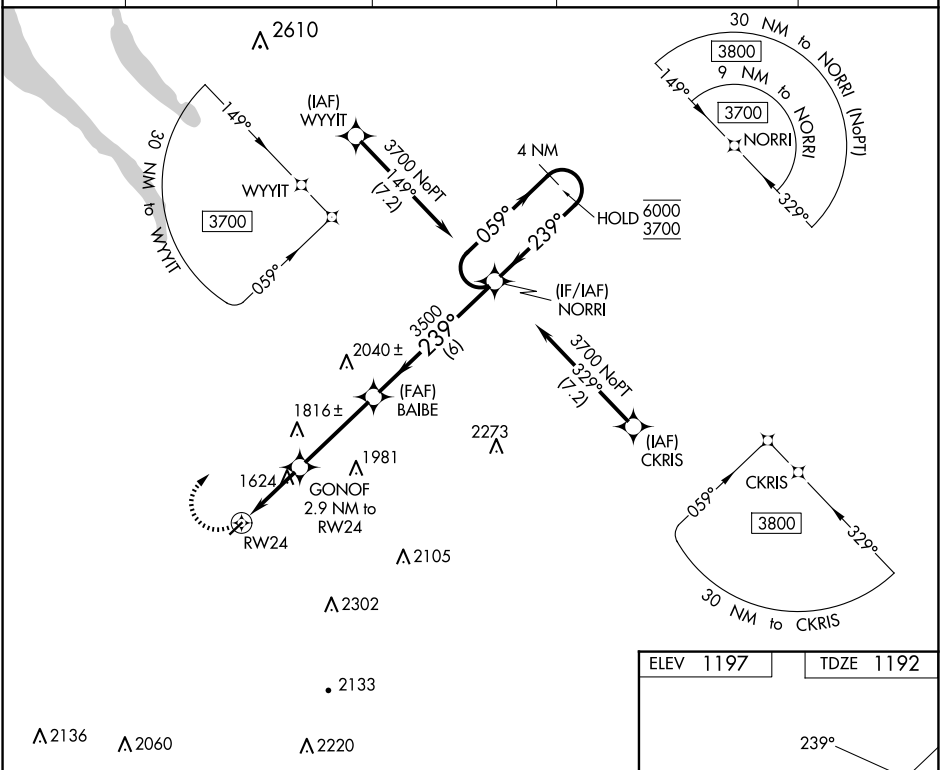



RNAV (GPS) RWY 24
CORTLAND COUNTY/CHASE FLD (N03)

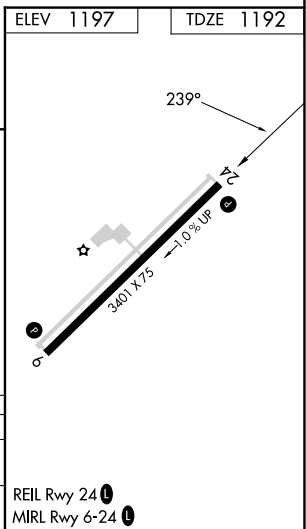
Rwy 24 helicopter visibility reduction below $\frac{3}{4}$ SM NA.

MISSED APPROACH: Climbing right turn to 3700 direct NORRI and hold.

AWOS-3 132.225	BINGHAMTON APP CON ★ 118.6 257.625 (S-SE)	ELMIRA APP CON ★ 124.3 257.8 (W)	SYRACUSE APP CON 126.125 269.125 (N)	UNICOM 122.8 (CTAF) 0
--------------------------	---	--	--	--



CATEGORY	A	B	C	D
LNAV MDA	1880-1	688 (700-1)	1880-2 688 (700-2)	NA
 CIRCLING	1940-1 743 (800-1)	1980-1 783 (800-1)	2240-3 1043 (1100-3)	NA



RNAV (GPS) RWY 24

NE-2, 10 JUL 2025 to 07 AUG 2025

NE-2, 10 JUL 2025 to 07 AUG 2025