

APP CRS
175°

Rwy Idg
4887

TDZE
707

Apt Elev
719

RNAV (GPS) RWY 17

BOYNE MOUNTAIN (BFA)

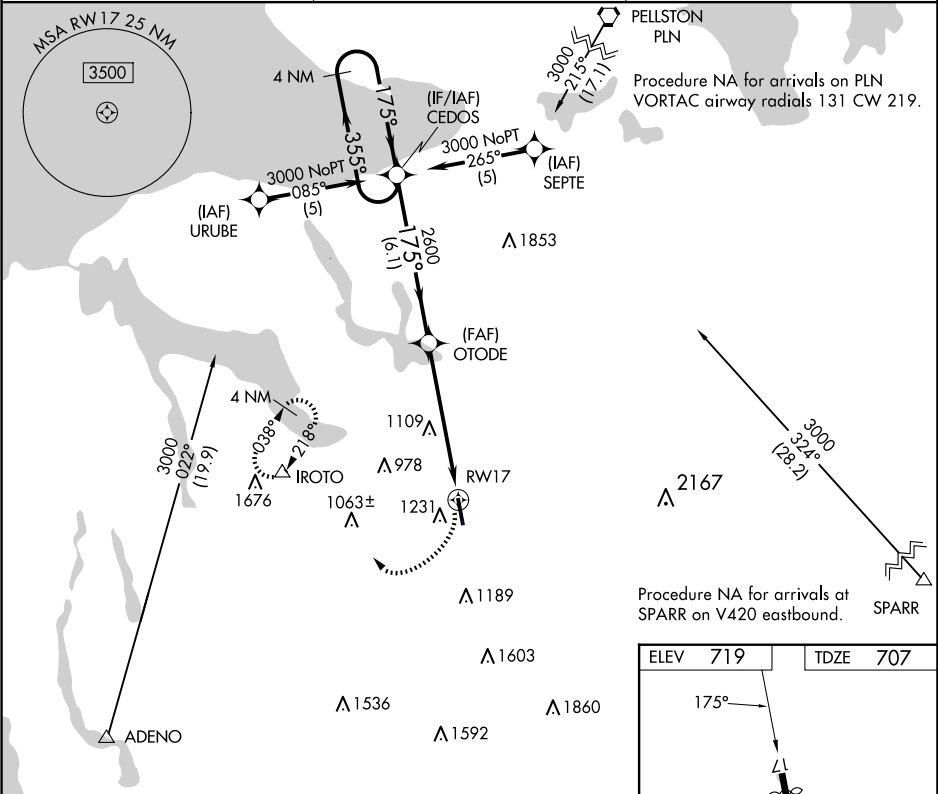
RNP APCH - GPS.

NA

Circling NA west of Rwy 17-35. Rwy 17 helicopter visibility reduction below 1 SM NA. Procedure NA at night. When local altimeter setting not received, use Bellaire altimeter setting. VDP NA when using Bellaire altimeter setting.

MISSED APPROACH:
Climbing right turn to 3000 direct IROTO and hold.

AWOS-3PT 118.675	MINNEAPOLIS CENTER 134.6 354.05	UNICOM 122.8 (CTAF) 0
---------------------	------------------------------------	--------------------------



4 NM Holding Pattern CEDOS

3000 175°

OTODE

2600

2.6 NM to RW17

3.05° TCH 40

3.2 NM

2.6

CATEGORY	A	B	C	D
LNAB MDA	1580 - 1 873 (900-1)	1580 - 1¼ 873 (900-1¼)	1580 - 2½ 873 (900-2½)	1580 - 2¾ 873 (900-2¾)
CIRCLING	1580 - 1¼ 861 (900-1¼)		1760 - 3 1041 (1100-3)	1880 - 3 1161 (1200-3)

ELEV 719

TDZE 707

175°

0 0.3% UP

5167 X 100

35

REIL Rwy 17 and 35 0

MIRL Rwy 17-35 0