

APP CRS	Rwy Idg	4209
322°	TDZE	1313
	Apt Elev	1321

RNAV (GPS) RWY 32

STEPHENVILLE CLARK RGNL (SEP)

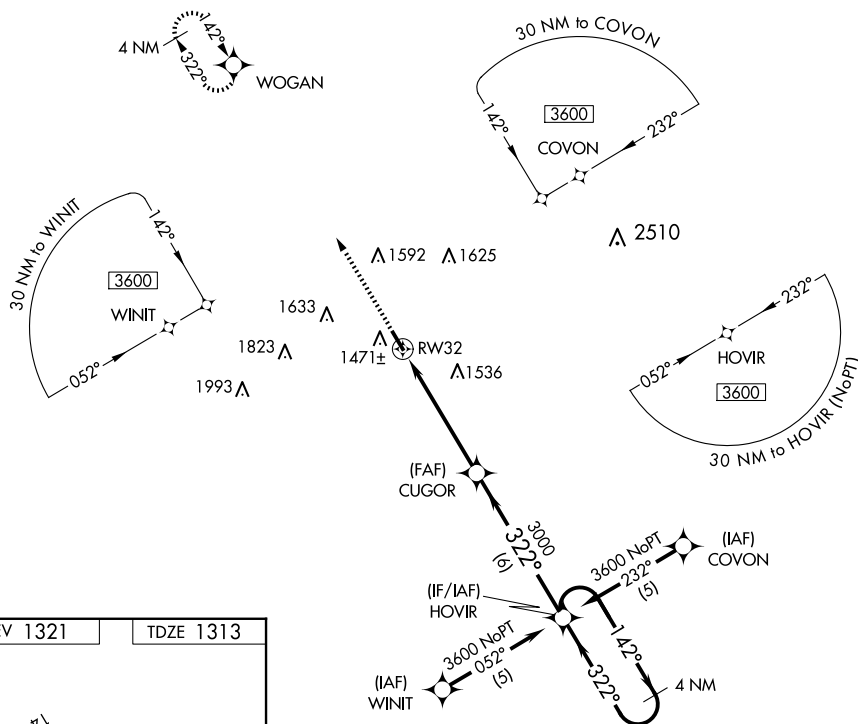
T DME/DME RNP-0.3 NA. Rwy 32 helicopter visibility
A reduction below 1 SM NA. Straight-in Rwy 32 NA at night,
circling Rwy 32 NA at night.

MISSED APPROACH: Climb to 3600 direct WOGAN and hold.

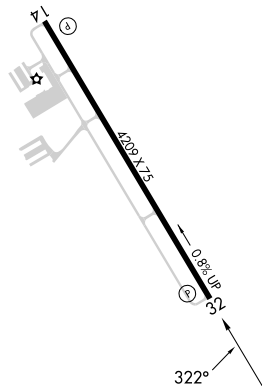
AWOS-3PT
118.075

FORT WORTH CENTER
127.15 314.0

UN|COM
122.8 (CTAF)



ELEV 1321		TDZE 1313
-----------	--	-----------



MIRL Rwy 14-32

STEPHENVILLE, TEXAS
Orig-B 20MAY21

32°13'N-98°11'W

STEPHENVILLE CLARK RGNL (SEP)
RNAV (GPS) RWY 32

SC-2, 10 JUL 2025 to 07 AUG 2025

CATEGORY	A	B	C	D
LNAV MDA	1820-1	507 (500-1)	1820-1½	507 (500-1½)
CIRCLING	1820-1	499 (500-1)	2000-2 679 (700-2)	2000-2¼ 679 (700-2¼)