

WAAS CH 93934 W02A	APP CRS 021°	Rwy Idg TDZE 718 Apt Elev 718	5001 718 718
--	------------------------	---	---

RNAV (GPS) RWY 2

ELLINGTON (LUG)

RNP APCH - GPS.

▼

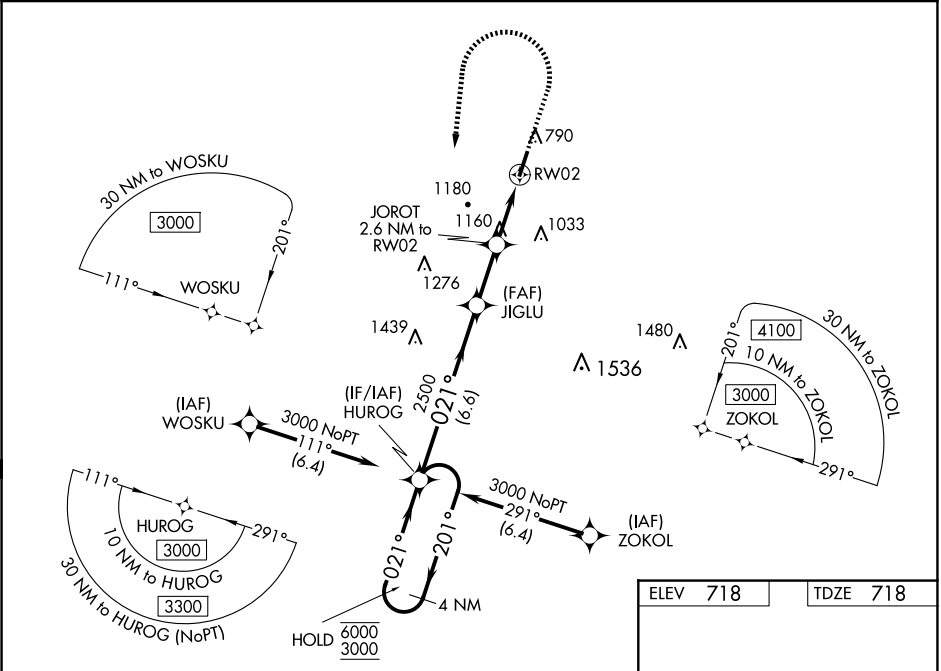
▲

NA

Baro-VNAV and VDP NA when using BNA altimeter setting. Circling Rwy 20 NA at night. Rwy 2 helicopter visibility reduction below ¼ SM NA. When local altimeter setting not received, use BNA altimeter setting and increase LPV DA to 1096 feet and all visibilities ½ SM. Increase LNAV/VNAV DA to 1531 feet and all visibilities ½ SM. Increase all MDAs 120 feet and LNAV visibility Cat B ¼ SM, Cats C and D ½ SM, Circling visibility Cats A and B ¼ SM and Cat C ½ SM. For uncompensated Baro-VNAV systems, LNAV/VNAV NA below -16°C or above 54°C.

MISSED APPROACH:
Climb to 1300 then climbing left turn to 3000 direct HUOG and hold.

AWOS-3 135.775	MEMPHIS CENTER 128.15 323.125	UNICOM 122.8 (CTAF)
--------------------------	---	-------------------------------



4 NM Holding Pattern		HUOG		1300	3000	HUOG
6000 ← 201°		3000 → 021°		JIGLU 2500		
GP 3.30°		TCH 55		JOROT 2.6 NM to RWY 2		
2500		1700		1.8 NM to RWY 2		
6.6 NM		2.3 NM		0.8 NM		
CATEGORY	A	B	C	D		
LPV DA	993-7/8	275 (300-7/8)		NA		
LNAV/VNAV DA	1428-2	710 (800-2)		NA		
LNAV MDA	1420-1	702 (800-1)	1420-2	702 (800-2)		
CIRCLING	1420-1 702 (800-1)	1480-1 762 (800-1)	1540-2 ½ 822 (900-2 ½)	1640-3 922 (1000-3)		

