

TRUCKEE, CALIFORNIA

AL-6021 (FAA)

25163

WAAS CH 87135 W20A	APP CRS 182°	Rwy Ldg 4539 TDZE 5898 Apt Elev 5904
--	------------------------	---

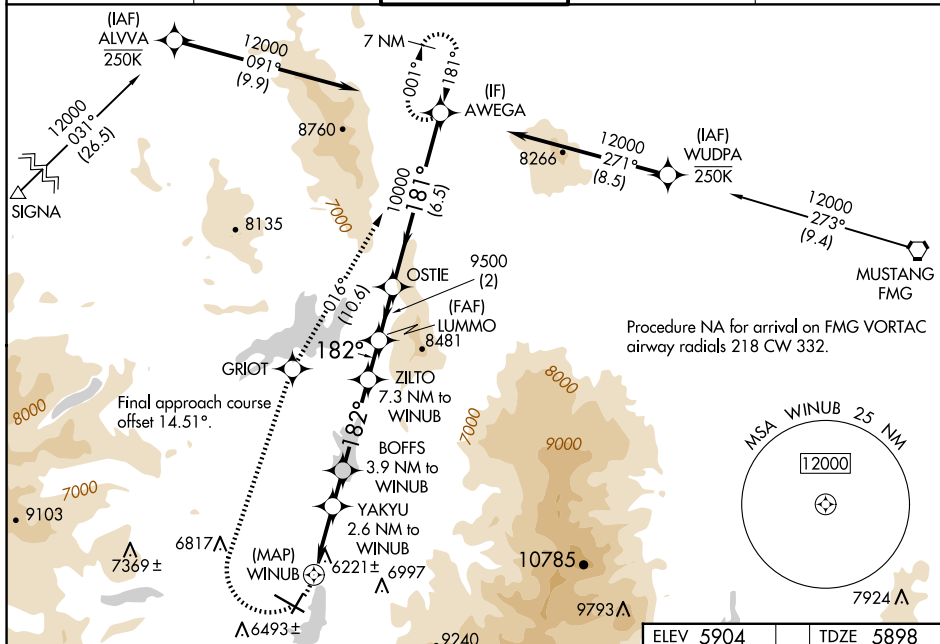
RNAV (GPS) RWY 20
TRUCKEE-TAHOE (TRK)

RNP APCH.

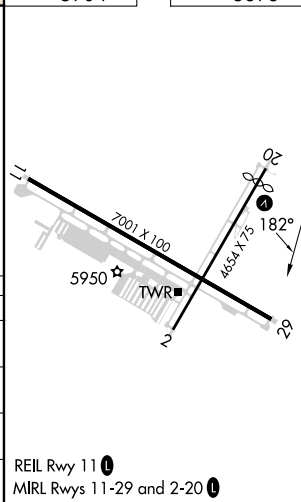
T Circling to Rwy 2, 11, 29 NA at night. Circling NA for
A Cat C south of Rwy 29 and east of Rwy 2. Rwy 20
❄ -17°C helicopter visibility reduction below $\frac{3}{4}$ SM NA. When
 local altimeter setting not received, procedure NA.

MISSED APPROACH: (Do not exceed 200K until GRIOT)
Climbing right turn to 12000 direct GRIOT and on track 016°
to AWEGA and hold, continue climb-in-hold to 12000.
*Missed approach requires minimum climb of 270 feet per NM
to 7700.

D-ATIS 118.0	OAKLAND CENTER 127.95 316.1	TRUCKEE TOWER ★ 120.575 (CTAF) 0	GND CON 118.3	UNICOM 122.95
------------------------	---------------------------------------	--	-------------------------	-------------------------



CATEGORY	A	B	C	D
LP MDA*	6480-1	582 (600-1)	6480-1 $\frac{3}{4}$ 582 (600-1 $\frac{3}{4}$)	NA
LP MDA	6780-1 $\frac{1}{4}$	882 (900-1 $\frac{1}{4}$)	6780-2 $\frac{1}{2}$ 882 (900-2 $\frac{1}{2}$)	NA
LNAV MDA	7120-1 $\frac{1}{4}$ 1222 (1300-1 $\frac{1}{4}$)	7120-1 $\frac{1}{2}$ 1222 (1300-1 $\frac{1}{2}$)	7120-3 1222 (1300-3)	NA
C CIRCLING	7120-1 $\frac{1}{4}$ 1216 (1300-1 $\frac{1}{4}$)	7220-1 $\frac{1}{2}$ 1316 (1400-1 $\frac{1}{2}$)	7700-3 1796 (1800-3)	NA



TRUCKEE, CALIFORNIA
Amdt 1A 23APR20

39°19'N-120°08'W

TRUCKEE-TAHOE (TRK)
RNAV (GPS) RWY 20

SW-2, 10 JUL 2025 to 07 AUG 2025

SW-2, 10 JUL 2025 to 07 AUG 2025