

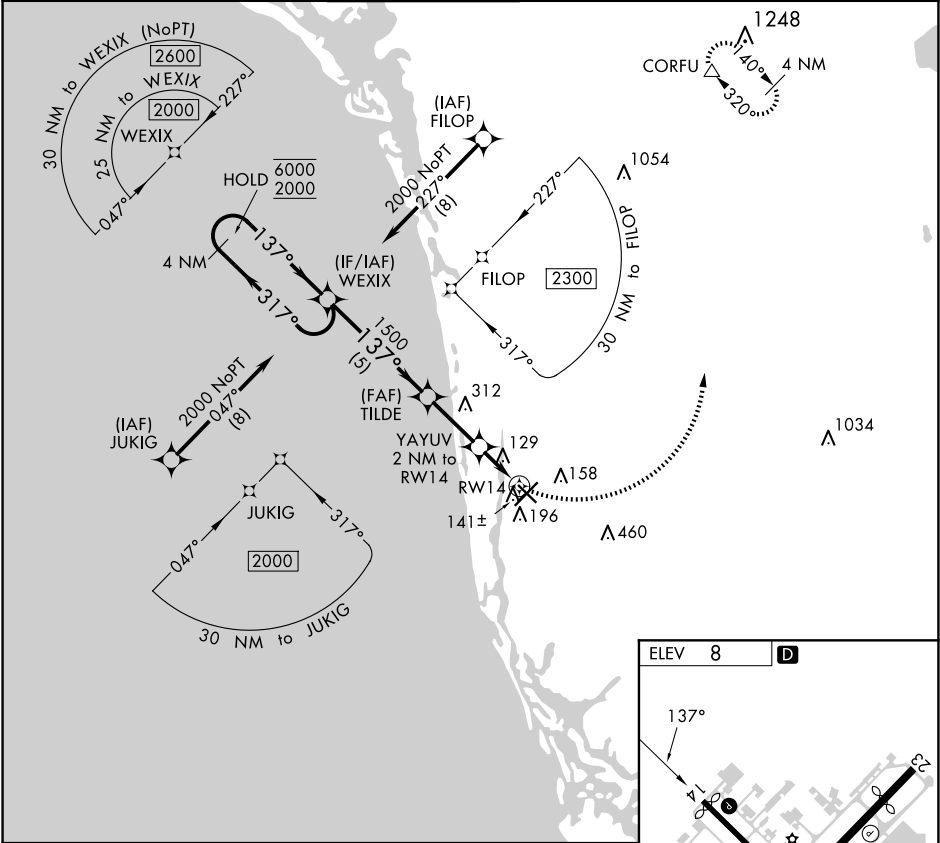
APP CRS  
**137°**

Rwy Idg  
TDZE  
Apt Elev  
**8**

**N/A**  
**N/A**  
**8**

**RNAV (GPS)-B**  
NAPLES MUNI (APF)

RNP APCH.			MISSED APPROACH: Climbing left turn to 2300 direct CORFU and hold.		
<div><div><div></div><div></div><div></div></div></div>					
ATIS 134.225	FORT MYERS APP CON★ 124.125 371.85	NAPLES TOWER★ 128.5 (CTAF) 0	GND CON 121.6	CLNC DEL 118.0	CLNC DEL 124.125 (When twr closed)



4 NM Holding Pattern WEXIX

6000  
2000

137°  
317°

TILDE

1500

3.00 NM  
TCH 40

680

YAYUV  
2 NM to RW14

RW14

2300 CORFU

CATEGORY	A	B	C	D
CIRCLING	580-1	572 (600-1)	680-2 672 (700-2)	820-2¾ 812 (900-2¾)

ELEV 8 D

REIL Rwy 5, 14, 23 and 32 0  
MIRL Rwy 5-23 and 14-32 0