

NAPLES, FLORIDA

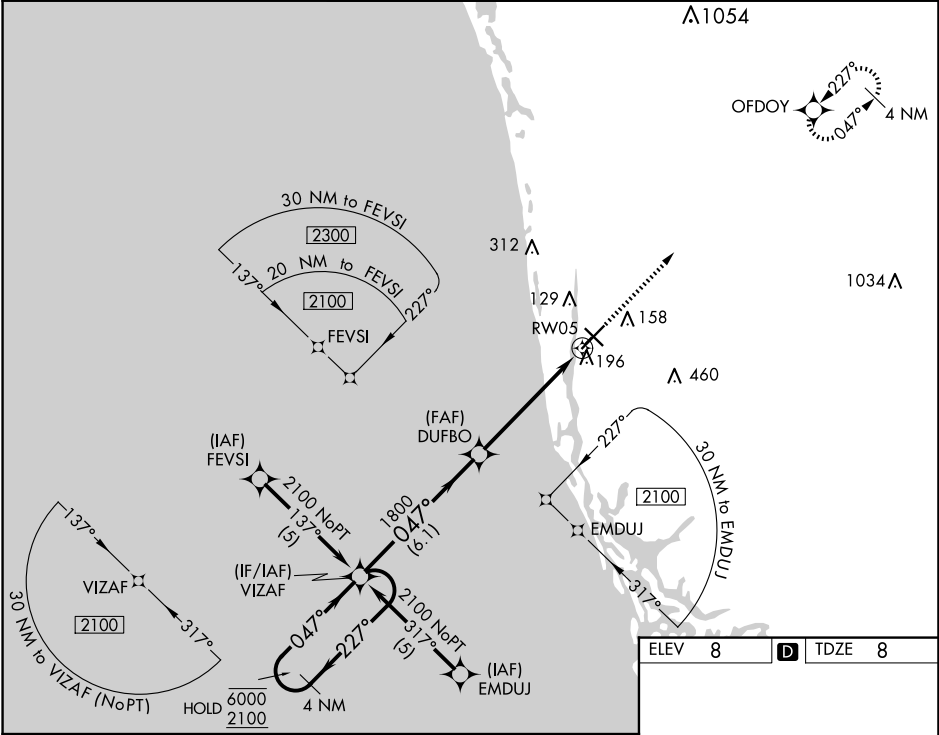
AL-6020 (FAA)

25107

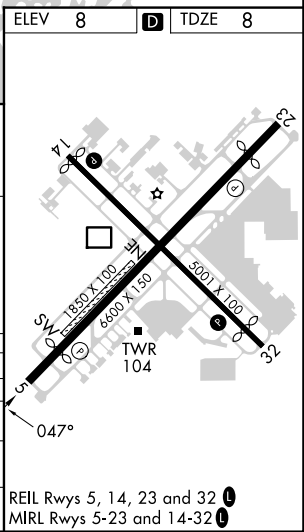
WAAS CH 73015 W05A	APP CRS 047°	Rwy ldg TDZE Apt Elev 5000 8 8
--	------------------------	--

RNAV (GPS) RWY 5
NAPLES MUNI (APF')

RNP APCH. For uncompensated Baro-VNAV systems, LNAV/VNAV NA below 5°C or above 54°C.		MISSED APPROACH: Climb to 2100 direct OFDOY and hold.			
ATIS 134.225	FORT MYERS APP CON★ 124.125 371.85	NAPLES TOWER★ 128.5 (CTAF) 0	GND CON 121.6	CLNC DEL 118.0	CLNC DEL 124.125 (When twr closed)



4 NM Holding Pattern		VGSI and RNAV glidepath not coincident (VGSI Angle 3.50/TCH 31).		2100	OFDOY
6000 2100		DUFBO		1800	*1.3 NM to RWY05
GP 3.00° TCH 40		1800		RWY05	
←227°		047°		*LNAV only.	
047°		047°		1800	
6.1 NM		4.1 NM		1.3 NM	
CATEGORY	A	B	C	D	
LPV DA		295-7/8	287 (300-7/8)		
LNAV/VNAV DA		446-1/4	438 (500-1/4)		
LNAV MDA	540-1	532 (600-1)	540-1 1/2	532 (600-1 1/2)	
CIRCLING	580-1	572 (600-1)	680-2 672 (700-2)	820-2 3/4 812 (900-2 3/4)	



NAPLES, FLORIDA
Amdt 2C 17JUN21

26°09'N-81°47'W

NAPLES MUNI (APF')
RNAV (GPS) RWY 5