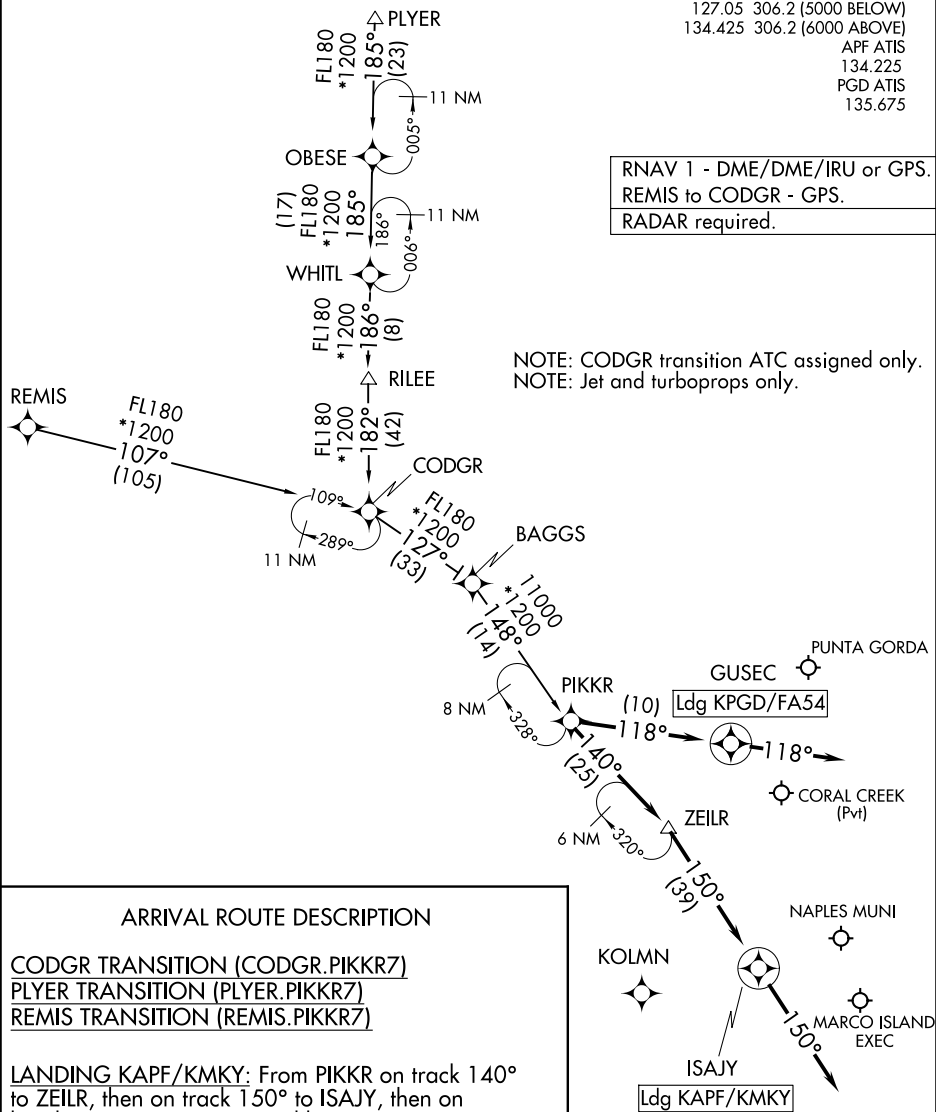


FORT MYERS APP CON ★
127.05 306.2 (5000 BELOW)
134.425 306.2 (6000 ABOVE)
APF ATIS
134.225
PGD ATIS
135.675

RNAV 1 - DME/DME/IRU or GPS.
REMIS to CODGR - GPS.
RADAR required.

NOTE: CODGR transition ATC assigned only.
NOTE: Jet and turboprops only.



ARRIVAL ROUTE DESCRIPTION

CODGR TRANSITION (CODGR.PIKKR7)

PLYER TRANSITION (PLYER.PIKKR7)

REMIS TRANSITION (REMIS.PIKKR7)

LANDING KAPF/KMKY: From PIKKR on track 140° to ZEILR, then on track 150° to ISAJY, then on heading 150° or as assigned by ATC. Expect RADAR vectors to final approach course.

LANDING KPGD/FA54: From PIKKR on track 118° to GUSEC, then on heading 118° or as assigned by ATC. Expect RADAR vectors to final approach course.

NOTE: Chart not to scale.