

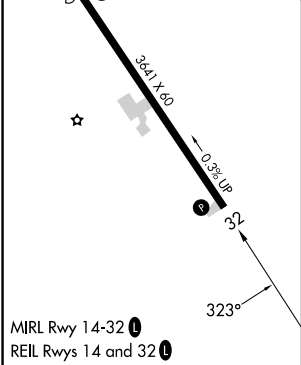
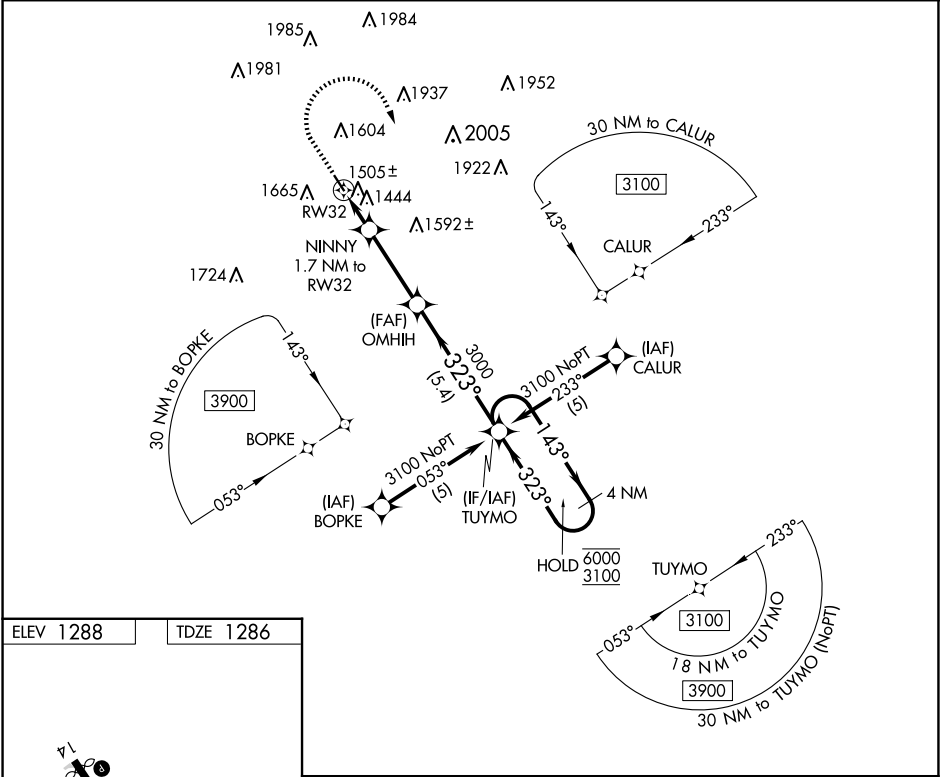
APP CRS	Rwy Idg	3641
323°	TDZE	1286
	Apt Elev	1288

RNAV (GPS) RWY 32

AUDUBON COUNTY (ADU)

RNP APCH - GPS.	MISSED APPROACH: Climb to 2500 then climbing right turn to 3100 direct TUYMO and hold.
When local altimeter setting not received, procedure NA. Rwy 32 helicopter visibility reduction below 3/4 SM NA. Circling Rwy 14 NA at night.	

AWOS-3 118.075	MINNEAPOLIS CENTER 119.6 290.4	UNICOM 122.8 (CTAF) 1
-------------------	-----------------------------------	--------------------------



2500	3100	TUYMO	TUYMO	4 NM Holding Pattern
↑	↻	✧	OMHIIH	143° → 6000 ← 323° 3100
NINNY 1.7 NM to RW32	3.25 NM TCH 40	3000	323°	323°
1.7 NM	3.2 NM	5.4 NM		
CATEGORY	A	B	C	D
LNAV MDA	1760-1	474 (500-1)	NA	NA
CIRCLING	1980-1	692 (700-1)	NA	NA

NC-3, 10 JUL 2025 to 07 AUG 2025

NC-3, 10 JUL 2025 to 07 AUG 2025