

WAAS CH <b>77929</b> <b>W11A</b>	APP CRS <b>111°</b>	Rwy Idg TDZE <b>1988</b> Apt Elev <b>1989</b>	<b>5091</b>
--	------------------------	---	-------------

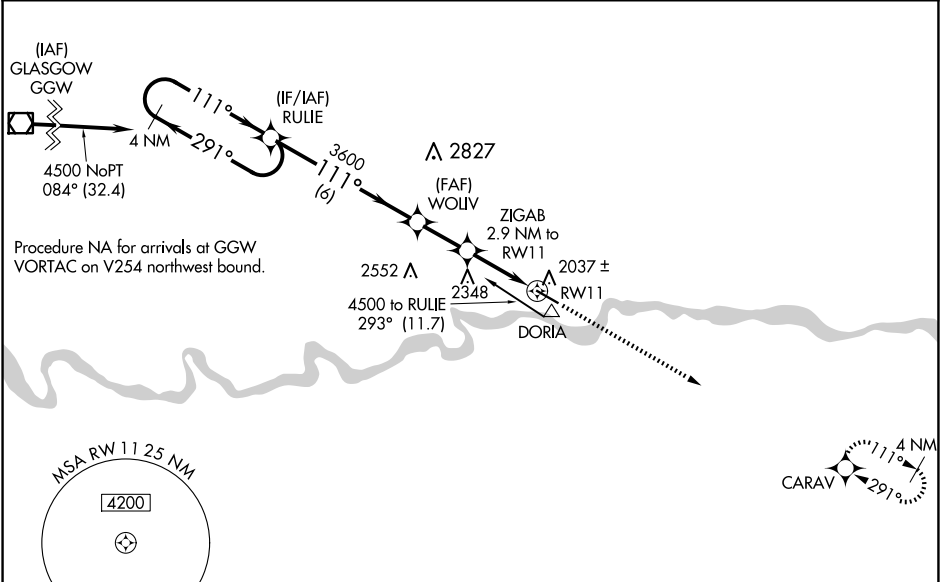
RNAV (GPS) RWY 11

L M CLAYTON (OLF')

**⚠** For uncompensated Baro-VNAV systems, LNAV/VNAV NA below -18°C (0°F) or above 54°C (130°F). DME/DME RNP-0.3 NA. When local altimeter setting not received, use Wokla FLD/Glasgow-Valley County altimeter setting: increase LPV DA to 2329 ft and visibility ¾ SM, LNAV/VNAV DA to 2407 ft and visibility ½ SM; increase all MDA 160 feet and LNAV and Circling visibility Cat C/D ½ SM. Baro-VNAV and VDP NA with Glasgow altimeter setting.

MISSED APPROACH:  
Climb to 4800 direct  
CARAV and hold.

ASOS <b>118.325</b>	SALT LAKE CENTER <b>126.85 305.2</b>	UNICOM <b>122.8 (CTAF) 1</b>
------------------------	---	---------------------------------



ELEV 1989

TDZE 1988

4 NM Holding Pattern

VGSI and RNAV glidepath not coincident (VGSI Angle 3.00/TCH 28).

4800 CARAV

111° to RW11

\* LNAV only.

4500 ← 291°

GP 3.00°

TCH 40

3600

\*2940

6 NM

2 NM

1.4 NM

1.5 NM

CATEGORY	A	B	C	D
LPV DA	2188-¾ 200 (200-¾)			
LNAV/VNAV DA	2266-7/8 278 (300-7/8)			
LNAV MDA	2500-1 512 (600-1)		2500-1¾ 512 (600-1¾)	
CIRCLING	2500-1 511 (600-1)		2660-2 2780-2½ 671 (700-2) 791 (800-2½)	

MIRL Rwy 11-29 1

REIL Rwy 11-29 1