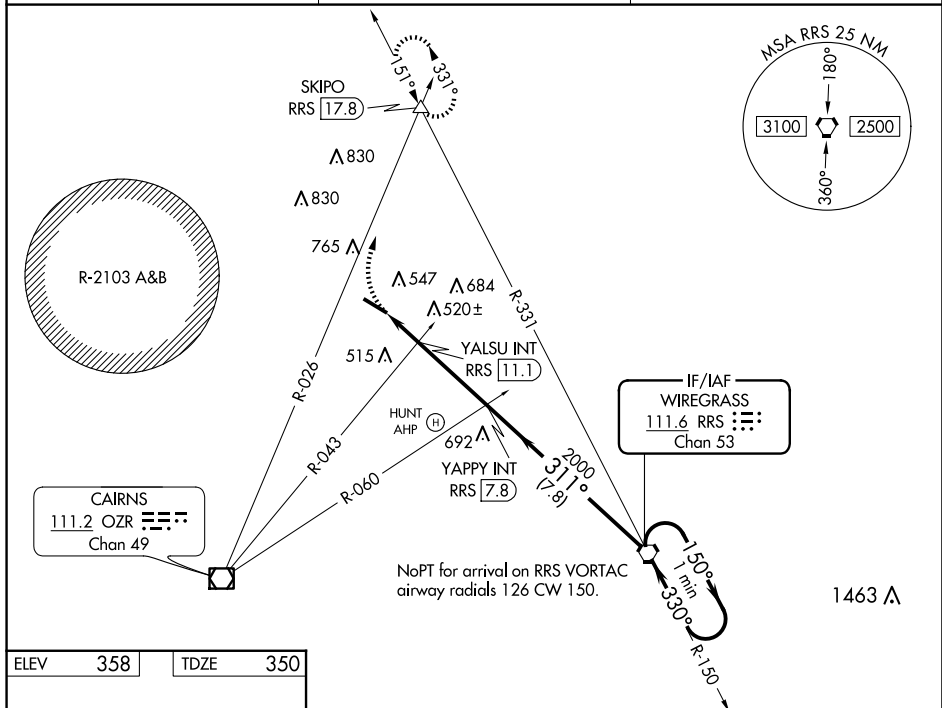


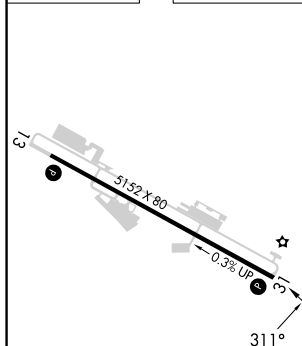
VOR RWY 31
OZARK/BLACKWELL FLD (71J)

MISSED APPROACH: Climbing right turn to 2000 on OZR VOR/DME R-026 to SKIPO INT/RRS 17.8 DME and hold.

DHN ASOS 135.725	CAIRNS APP CON ★ 125.4 327.125	UNICOM 122.7 (CTAF) ①
----------------------------	--	---------------------------------



ELEV	358		TDZE	350
------	-----	--	------	-----



REIL Rwy 13 and 31 **L**
MIRL Rwy 13-31 **L**

FAF to MAP 4.9 NM					
Knots	60	90	120	150	180
Min:Sec	4:54	3:16	2:27	1:58	1:38

2000
OZR R-026
SKIPO
△

RRS 12.7
YALSU INT
RRS 11.1
YAPPY INT
RRS 7.8
RRS VORTAC
One Minute Holding Pattern

880
2000
2100

1.6 NM
3.3 NM
7.8 NM

311°
150°
330°

CATEGORY	A	B	C	D
S-31	880-1	530 (600-1)	880-1½ 530 (600-1½)	NA
CIRCLING	900-1 542 (600-1)	1100-1¾ 742 (800-1¾)	1100-2¼ 742 (800-2¼)	NA

YALSU FIX MINIMUMS (DUAL VOR RECEIVERS OR DME REQUIRED)

CATEGORY	A	B	C	D
S-31	820-1	470 (500-1)	820-1⅝ 470 (500-1⅝)	NA
CIRCLING	900-1 542 (600-1)	1100-1¾ 742 (800-1¾)	1100-2¼ 742 (800-2¼)	NA