

WAAS CH 62832 W31A	APP CRS 305°	Rwy Idg 5152 TDZE 350 Apt Elev 358
----------------------------------------	------------------------	---------------------------------------------------------------

RNAV (GPS) RWY 31
OZARK/BLACKWELL FLD (71J)

RNP APCH.

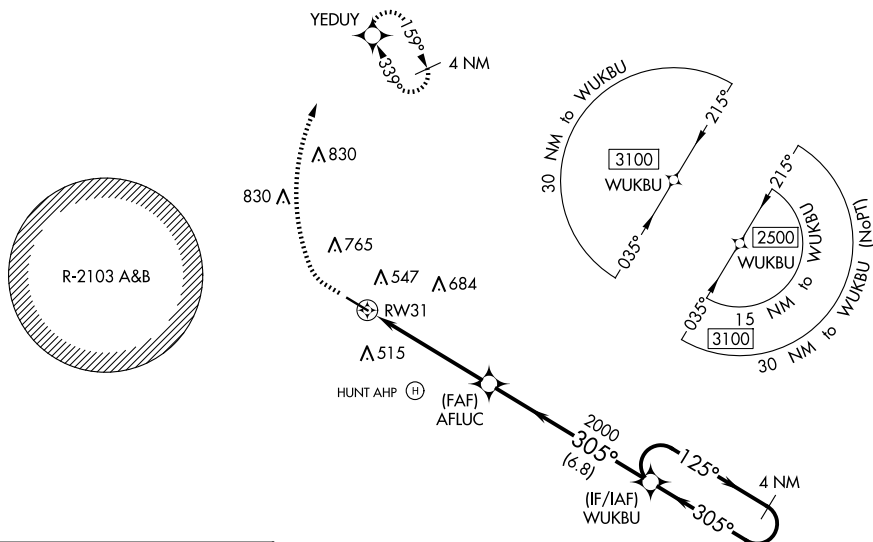
T Baro-VNAV NA. Use Dothan altimeter setting; when not received, use Cairns AAF (Fort Novosel) altimeter setting.
A NA Rwy 31 helicopter visibility reduction below $\frac{3}{4}$ SM NA. Circling Rwy 13, 31 NA at night.

MISSED APPROACH: Climb to 900 then climbing right turn to 2000 direct YEDUY and hold.

DHN ASOS
135.725

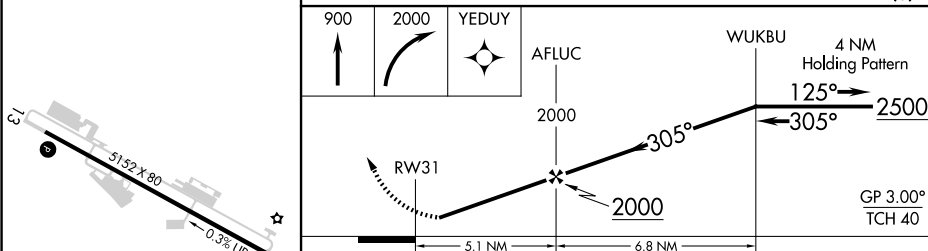
CAIRNS APP CON ★
125.4 327.125

UNICOM
122.7 (CTAF) **L**



ELEV	358		TDZE	350
------	-----	--	------	-----

1463 A



CATEGORY		A	B	C	D
LPV	DA	661-1 310 (400-1)			NA
RNAV/ VNAV	DA	851-1 ³ / ₄ 501 (500-1 ³ / ₄)			NA
RNAV	MDA	860-1 510 (600-1)		860-1 ³ / ₈ 510 (600-1 ³ / ₈)	NA
CIRCLING		900-1 542 (600-1)	1100-1 ³ / ₄ 742 (800-1 ³ / ₄)	1100-2 ¹ / ₄ 742 (800-2 ¹ / ₄)	NA

REIL Rwy 13 and 31 **L**
MIRL Rwy 13-31 **L**