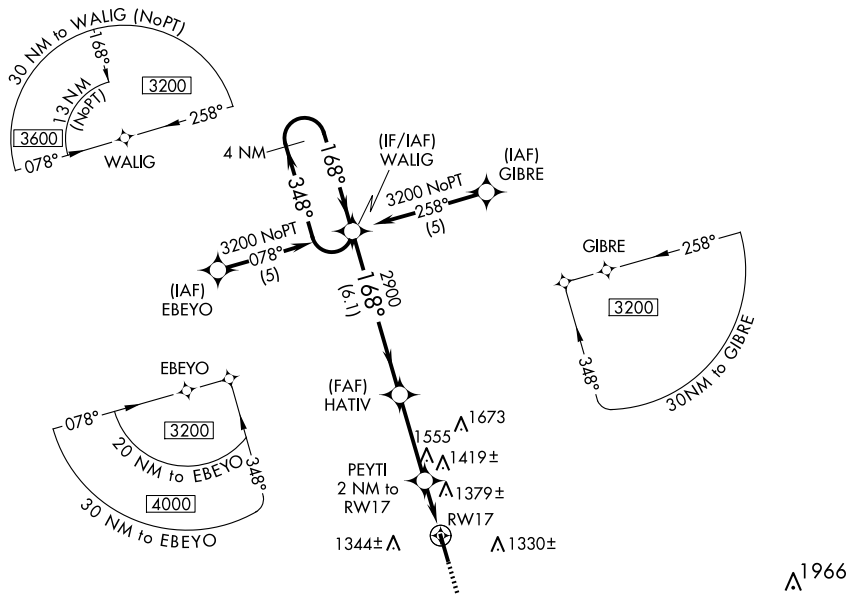


RNAV (GPS) RWY 17

WEST GEORGIA RGNL/O V GRAY FLD (CTJ)

T When local altimeter setting not received, use Newnan Coweta County altimeter
A setting and increase all MDAs 100 feet and visibility Cat C $\frac{1}{2}$ SM and Cat D $\frac{1}{4}$ SM.
Helicopter visibility reduction below $\frac{3}{4}$ SM NA.

MISSED APPROACH: Climb to 3200 direct JUGIL and hold.

UNICOM
122.975 (CTAF) **L**

ELEV 1165		TDZE 1164
-----------	--	-----------

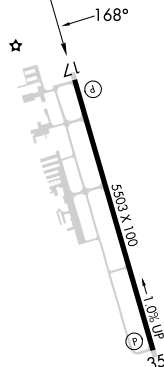


Diagram illustrating the 3200-2900-1860 VOR/DME/ILS approach for RW17. The diagram shows the following segments and angles:

- 4 NM Holding Pattern at 3200 feet.
- 168° turn.
- 348° heading.
- 168° turn.
- 3.04 NM segment to HATV.
- 3.7 NM segment to PEYTI (2 NM to RW17).
- 2 NM segment to RW17.
- 1860 feet MSL.
- 6.1 NM total distance from 3200 to HATV.
- 3.7 NM total distance from HATV to RW17.
- 2 NM distance from PEYTI to RW17.

Additional information:

- VGS and descent angles not coincident (VGS Angle 3.00/TCH 56).
- *1960 when using Newnan Coweta County altimeter setting.
- 3200, 2900, 1860 (feet MSL).
- WALIG, HATV, PEYTI, RW17 (Runway 17).
- JUGL (Jeppesen User Guide Link).

CATEGORY	A	B	C	D
LNAV MDA	1640-1	476 (500-1)	1640-1¼ 476 (500-1¼)	1640-1½ 476 (500-1½)
CIRCLING	1660-1 495 (500-1)	1700-1 535 (600-1)	1880-2 715 (800-2)	2000-2¾ 835 (900-2¾)

HIRL Rwy 17-35 **L**