

LOC I-CTJ
111.7

APP CRS
348°

Rwy Idg **5503**
TDZE **1140**
Apt Elev **1165**

ILS or LOC RWY 35

WEST GEORGIA RGNL/O V GRAY FLD (CTJ)

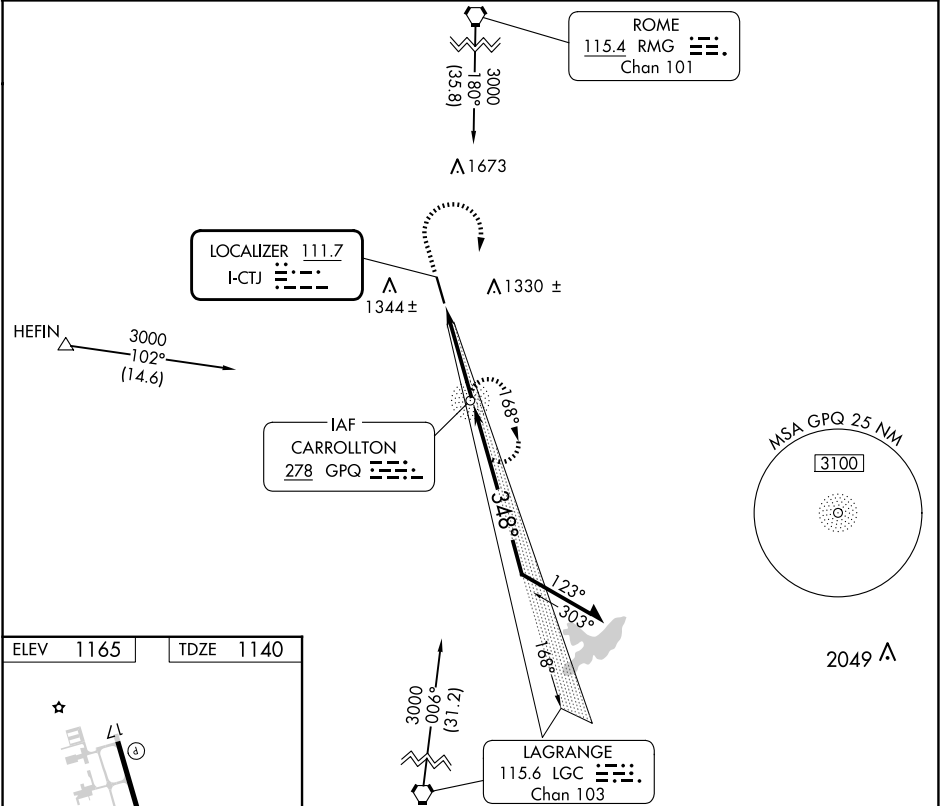
ADF required.

▼
NA

When local altimeter setting not received, use Newnan Coweta County altimeter setting and increase DA to 1430 feet and all visibilities $\frac{1}{4}$ SM; increase all MDAs 100 feet and visibility Cat C and D visibility $\frac{1}{2}$ SM.

MISSED APPROACH: Climb to 1800 then climbing right turn to 3000 direct GPQ NDB and hold.

AWOS-3 118.175	ATLANTA APP CON 121.0 268.7	CLNC DEL 121.6	UNICOM 122.975 (CTAF) 0
--------------------------	---------------------------------------	--------------------------	-----------------------------------



ELEV 1165 TDZE 1140

HIRL Rwy 17-35 0

FAF to MAP 3.6 NM

Knots	60	90	120	150	180
Min:Sec	3:36	2:24	1:48	1:26	1:12

1800 3000 GPQ

GPQ NDB

VGSI and ILS glidepath not coincident (VGSI Angle 3.00/TCH 54).
Remain within 10 NM

2328 168° 2900

348° 2400

GS 3.00° TCH 47

3.6 NM

CATEGORY A B C D

S-ILS 35 1340-3/4 200 (200-3/4)

S-LOC 35 1480-1 340 (400-1)

CIRCLING 1660-1 1700-1 1880-2 2000-2 3/4

495 (500-1) 535 (600-1) 715 (800-2) 835 (900-2 3/4)