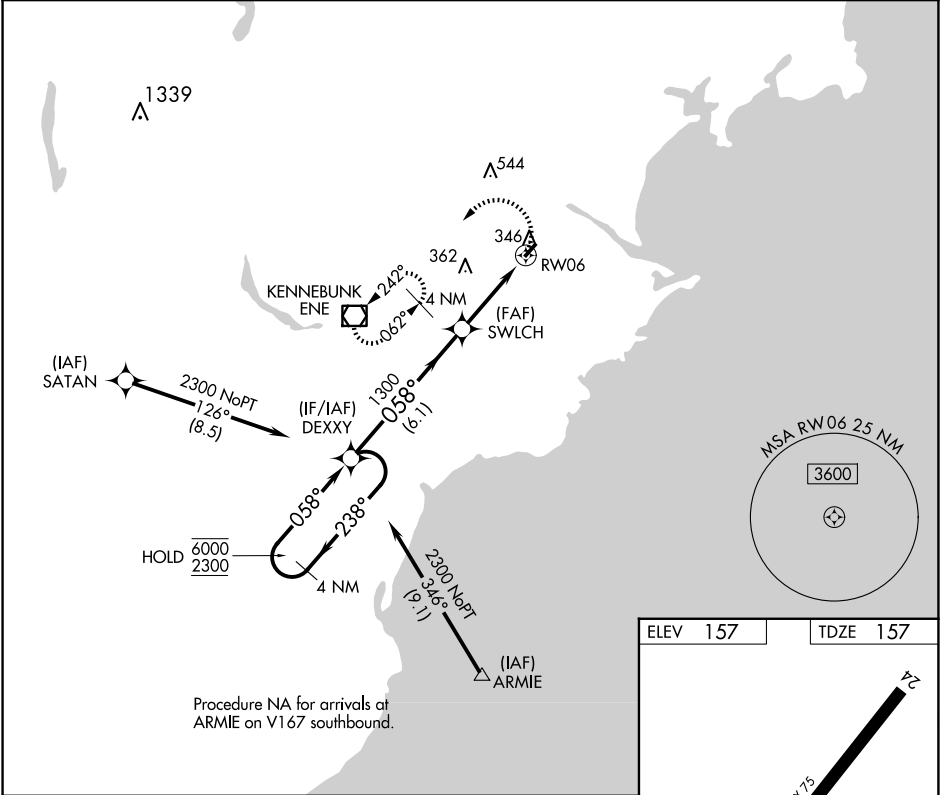


APP CRS	Rwy Idg	3000
058°	TDZE	157
	Apt Elev	157

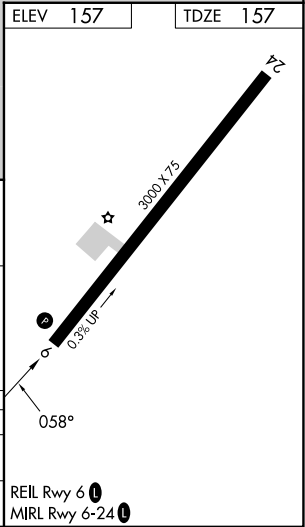
RNAV (GPS) RWY 6
BIDDEFORD MUNI (B19)

RNP APCH.	MISSED APPROACH: Climbing left turn to 3000 direct ENE VOR/DME and hold, continue climb-in-hold to 3000.
▼ ▲ NA	Rwy 6 helicopter visibility reduction below ¾ SM NA. Obtain local altimeter setting on CTAF; when not received use Sanford altimeter setting and increase all MDA 40 feet and LNAV visibility Cat C ½ SM, and Circling visibility Cat C ¾ SM. VDP NA when using Sanford altimeter setting. Circling Rwy 24 NA at night.

PORTLAND APP CON ★ 119.75 269.35	UNICOM 123.0 (CTAF) 1
-------------------------------------	--------------------------



4 NM Holding Pattern	DEXXY	VGSI and descent angles not coincident (VGSI Angle 3.50/TCH 31).	3000	ENE
6000 2300	238°	058°	1300	1.4 NM to RWY 06
		SWLCH	3.03° TCH 31	
		6.1 NM	2.1 NM	1.4 NM
CATEGORY	A	B	C	D
LNAV MDA	680-1	523 (600-1)	680-1½ 523 (600-1½)	NA
CIRCLING	780-1	623 (700-1)	800-1¾ 643 (700-1¾)	NA



NE-1, 10 JUL 2025 to 07 AUG 2025

NE-1, 10 JUL 2025 to 07 AUG 2025