

WAAS CH 60941 W22A	APP CRS 227°	Rwy Ldg TDZE 799 Apt Elev 800
--	------------------------	---

RNAV (GPS) RWY 22

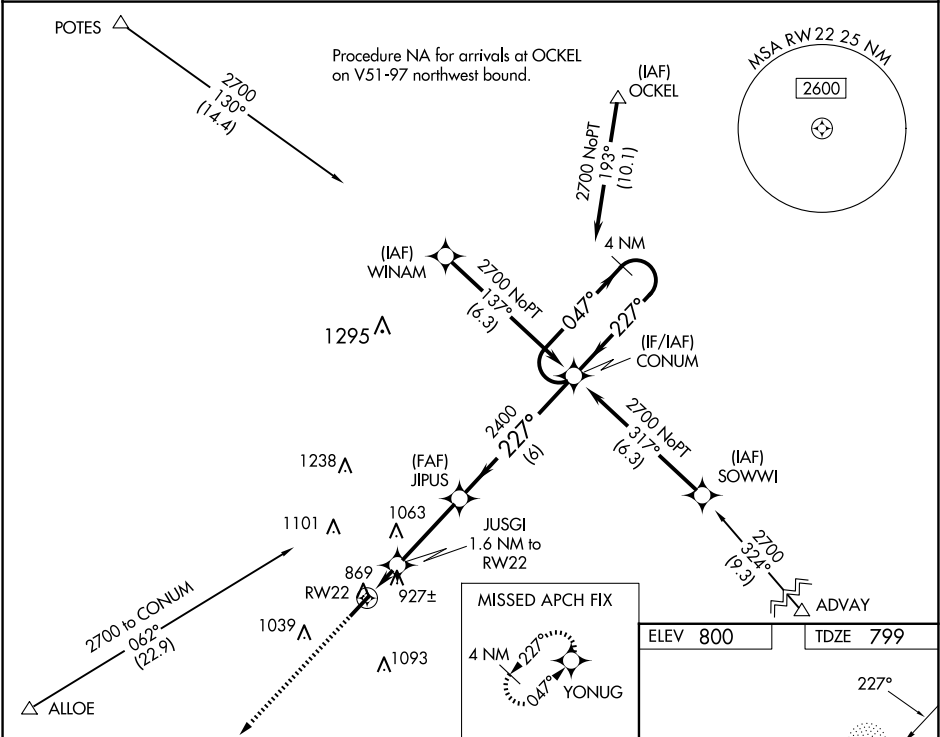
CRAWFORDSVILLE RGNL (CFJ)

RNP APCH.

▼ For uncompensated Baro-VNAV systems, LNAV/VNAV NA below -16°C or above 54°C. Baro-VNAV and VDP NA when using Greencastle altimeter setting. When local altimeter setting not received, use Greencastle altimeter setting: increase LPV DA to 1104 feet, LNAV/VNAV DA to 1115 feet; increase all MDA 60 feet and visibility Cats C and D ¼ SM. Rwy 22 helicopter visibility reduction below ¾ SM NA.

MISSED APPROACH: Climb to 2700 direct YONUG and hold.

AWOS-3PT 125.65	INDIANAPOLIS APP CON 119.05 317.8	UNICOM 122.8 (CTAF) 0
---------------------------	---	---------------------------------



2700 ↑ YONUG	VGSI and RNAV glidepath not coincident (VGSI Angle 3.00°/TCH 42).		4 NM Holding Pattern
*LNAV only	JUSGI 1.6 NM to RW22	JIPUS 2400	CONUM
*1 NM to RW22			
RW22			
1340*			
227°			
047°			
2700			
GP 3.00° TCH 50			
1 NM	0.6 NM	3.3 NM	6 NM
CATEGORY	A	B	C
LPV DA	1052-1	253 (300-1)	
LNAV/ VNAV DA	1063-1	264 (300-1)	
LNAV MDA	1180-1	381 (400-1)	1180-1½ 381 (400-1½)
◻ CIRCLING	1240-1 440 (500-1)	1260-1 460 (500-1)	1440-1¾ 640 (700-1¾) 1520-2¼ 720 (800-2¼)

