

WAAS CH <b>70331</b> <b>W35A</b>	APP CRS <b>352°</b>	Rwy ldg TDZE <b>2426</b> Apt Elev <b>2430</b>
--	------------------------	---

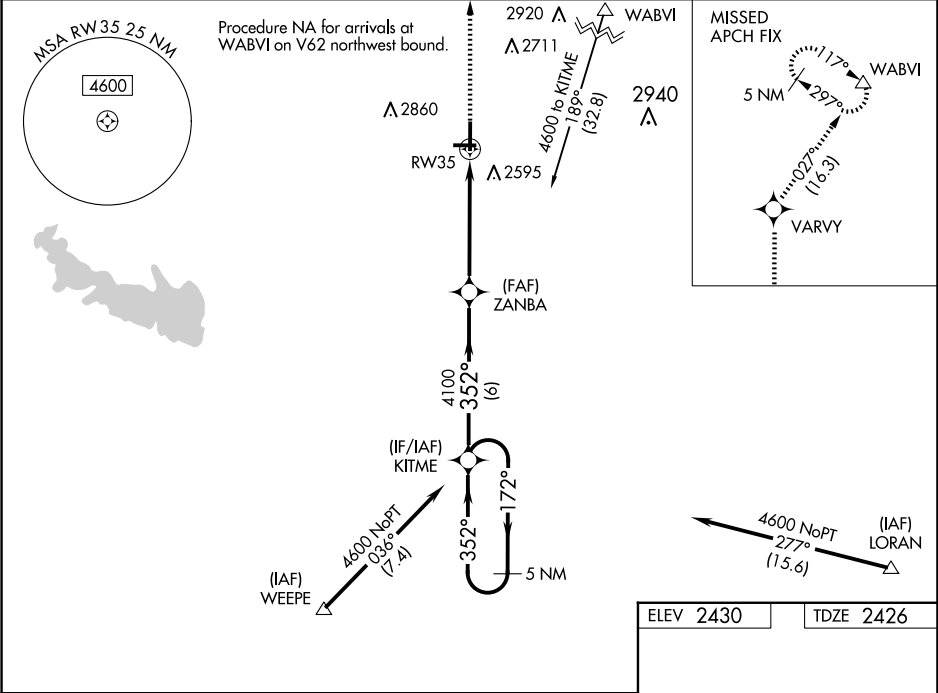
RNAV (GPS) RWY 35  
WINSTON FLD (SNK)

RNP APCH-GPS

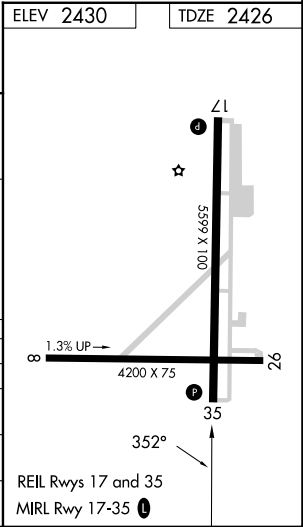
Baro-VNAV NA when using Sweetwater altimeter setting. For uncompensated Baro-VNAV systems, LNAV/VNAV NA below -19°C or above 54°C. VDP NA with Sweetwater altimeter setting. When local altimeter setting not received, use Sweetwater altimeter setting and increase LPV DA to 2698 and all visibilities ½ SM; increase LNAV/VNAV DA to 2748 and all visibilities ¾ SM; increase all MDAs 80 feet and LNAV and Circling visibility Cat C ¼ SM. Circling NA to Rwys 8 and 26. Circling Rwy 17 NA at night.

MISSED APPROACH:  
Climb to 5000 direct VARVY and on track 027° to WABVI and hold, continue climb-in-hold to 6000.

AWOS-3 <b>119.925</b>	FORT WORTH CENTER <b>127.45 290.3</b>	UNICOM <b>122.8 (CTAF)</b>
--------------------------	--	-------------------------------



VGSI and RNAV glidepath not coincident (VGSI Angle 3.00/TCH 40).				
5 NM Holding Pattern KITME				
4600 ← 172° → 352° → 352° → 4100				
GP 3.00° TCH 45				
6 NM 4.1 NM 1 NM				
CATEGORY	A	B	C	D
LPV DA	2626-¾		200 (200-¾)	NA
LNAV/VNAV DA	2676-¾		250 (300-¾)	NA
LNAV MDA	2780-1		354 (400-1)	NA
CIRCLING	2940-1 510 (600-1)		3220-2¼ 790 (800-2¼)	NA



WINSTON FLD (SNK)  
RNAV (GPS) RWY 35

SC-2, 10 JUL 2025 to 07 AUG 2025

SC-2, 10 JUL 2025 to 07 AUG 2025