

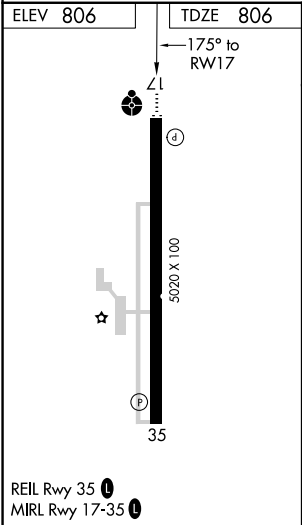
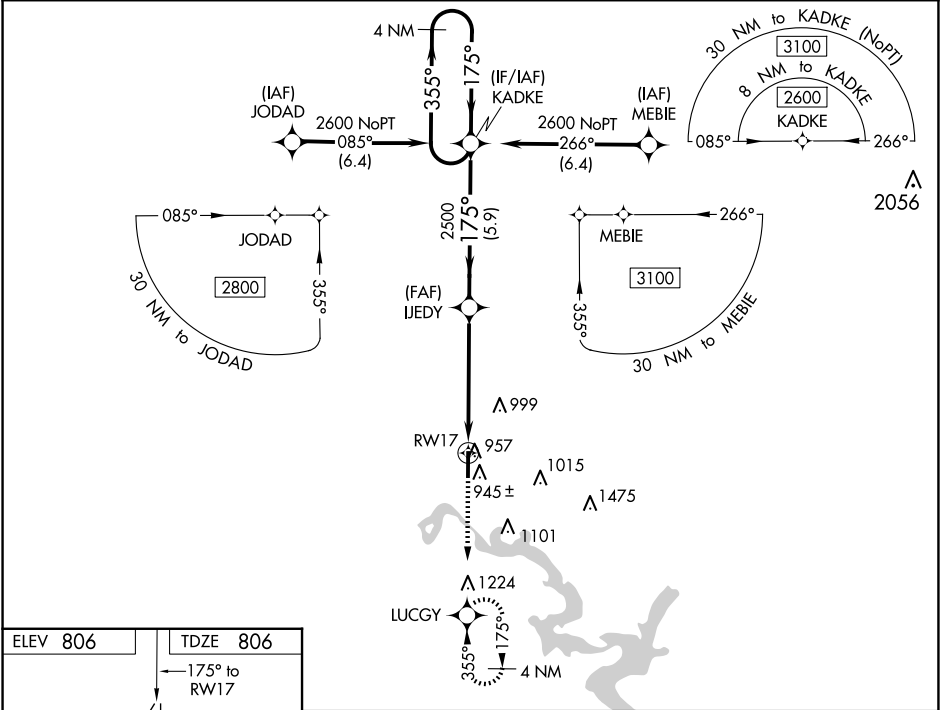
APP CRS	Rwy Idg	5020
175°	TDZE	806
	Apt Elev	806

RNAV (GPS) RWY 17

MIAMI RGNL (MIO)

RNP APCH. ▼ Baro-VNAV and VDP NA when using Grove altimeter setting. ▲ Rwy 17 helicopter visibility reduction below ¾ SM NA. When local altimeter setting not received, use Grove altimeter setting.	ODALS ● ⋮	MISSED APPROACH: Climb to 2500 direct LUCGY and hold.
--	--------------	---

AWOS-3PT 119.675	KANSAS CITY CENTER 128.6 282.325	UNICOM 122.8 (CTAF) ①
---------------------	-------------------------------------	--------------------------



4 NM Holding Pattern		VGSI and RNAV glidepath not coincident (VGSI Angle 3.00/TCH 42).		2500 ↑	LUCGY ✦	
		KADKE		*LNAV only		
2600 ← 355° 175° →		IJDY 2500		*1.5 NM to RW17		
GP 3.00° TCH 31		2500		RW17		
		5.9 NM		3.7 NM		
				1.5 NM		
CATEGORY	A	B	C	D		
LNAV/ VNAV DA	1206-1½ 400 (400-1½)				NA	
LNAV MDA	1320-1 514 (600-1)		1320-1⅜ 514 (600-1⅜)		NA	
CIRCLING	1320-1 514 (600-1)		1460-1¼ 654 (700-1¼)		NA	

SC-1, 10 JUL 2025 to 07 AUG 2025

SC-1, 10 JUL 2025 to 07 AUG 2025