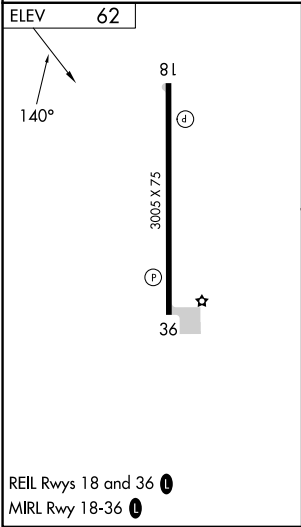
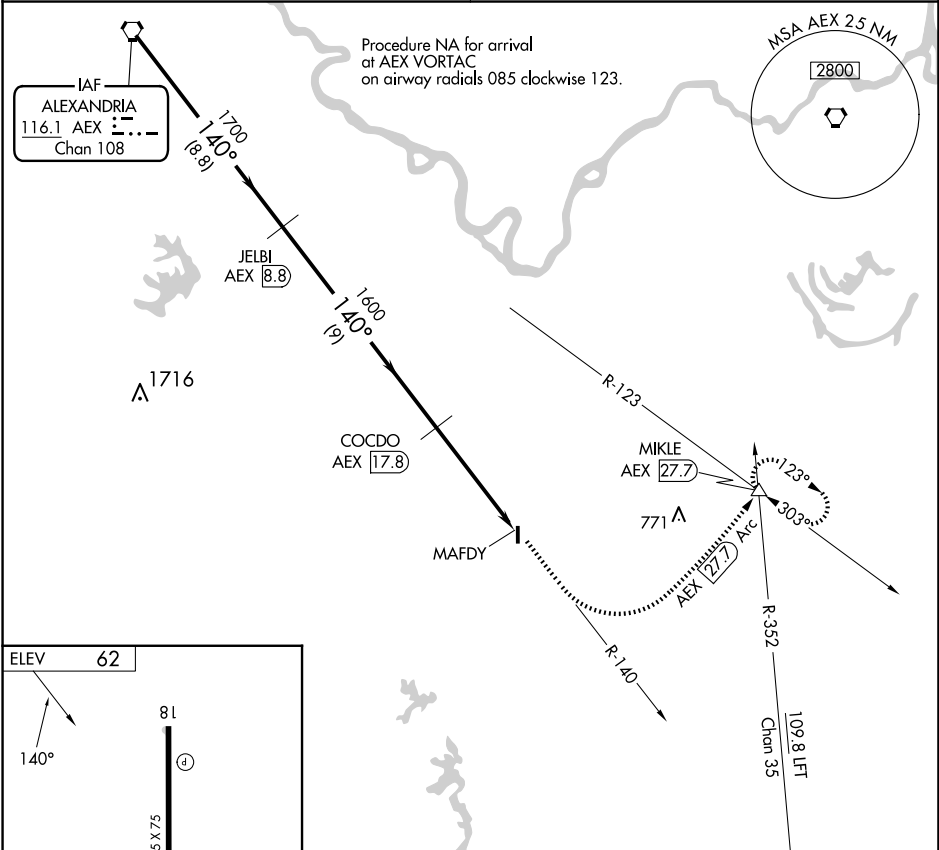


<b>VORTAC AEX</b> <b>116.1</b> Chan <b>108</b>	<b>APP CRS</b> <b>140°</b>	<b>Rwy Idg</b> <b>TDZE</b> <b>Apt Elev</b> <b>62</b>	<b>N/A</b> <b>N/A</b> <b>62</b>
--	-------------------------------	---	---------------------------------------

VOR/DME-A  
BUNKIE MUNI (2R6)

<b>NA</b> Use Alexandria Intl altimeter setting; when not received, use Esler Rgnl altimeter setting.	<b>MISSED APPROACH:</b> Climb to 3000 via AEX R-140 and AEX 27.7 DME Arc to MIKLE Int/AEX 27.7 DME and hold.
--	--

<b>POLK APP CON</b> <b>125.4 302.2</b>	<b>CTAF</b> <b>122.9 0</b>
---	-------------------------------



	<b>AEX VORTAC</b> <b>2000</b>	<b>JELBI AEX</b> <b>8.8</b>	<b>COCDO AEX</b> <b>17.8</b>	<b>MAFDY AEX</b> <b>22.4</b>	<b>MIKLE</b> <b>27.7</b> Arc
	<b>Procedure Turn NA</b>	<b>1700</b>	<b>1600</b>		
	<b>8.8 NM</b>	<b>9 NM</b>	<b>4.6 NM</b>		
<b>CATEGORY</b>	<b>A</b>	<b>B</b>	<b>C</b>	<b>D</b>	
<b>CIRCLING</b>	<b>880-1</b> <b>818 (900-1)</b>	<b>880-1¼</b> <b>818 (900-1¼)</b>	<b>NA</b>		

SC-4, 10 JUL 2025 to 07 AUG 2025

SC-4, 10 JUL 2025 to 07 AUG 2025