

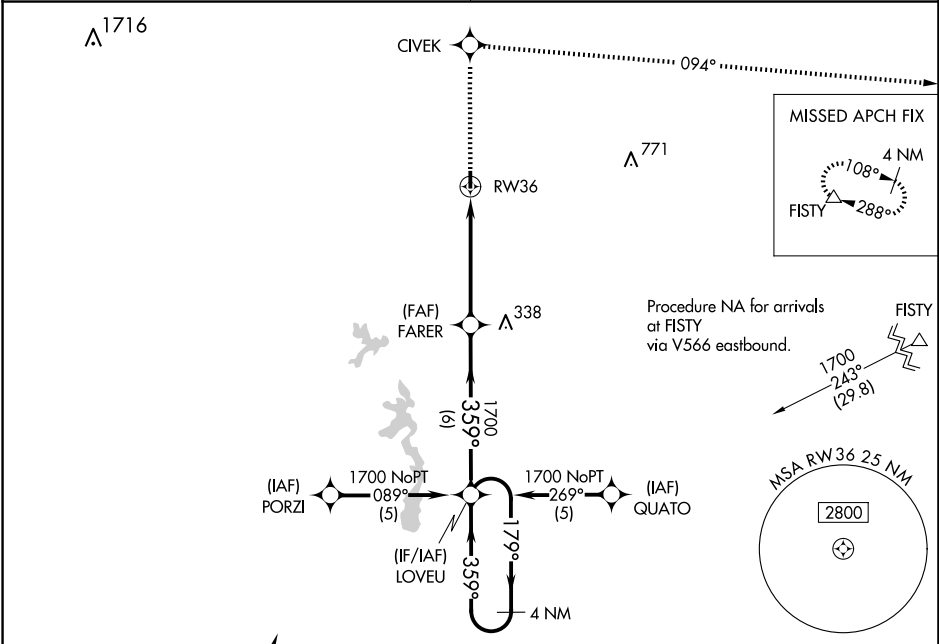
APP CRS	Rwy Idg	3005
359°	TDZE	60
	Apt Elev	62

# RNAV (GPS) RWY 36

BUNKIE MUNI (2R6)

<p><b>NA</b></p> <p>DME/DME RNP-0.3 NA. Visibility reduction by helicopters NA. Use Alexandria Intl altimeter setting; when not received, use Esler Rgnl altimeter setting.</p>	<p>MISSED APPROACH: Climb to 4000 direct CIVEK and right turn via 094° track to FISTY and hold.</p>
---	---

<p>POLK APP CON</p> <p>125.4 302.2</p>	<p>CTAF</p> <p>122.9 0</p>
--	----------------------------



ELEV	62	TDZE	60
------	----	------	----

REIL Rwy 18 and 36 0  
MIRL Rwy 18-36 0

VGSI and descent angles not coincident (VGSI Angle 3.25/TCH 26).			
4 NM Holding Pattern LOVEU			
1700 ← 179° / 359° → 359°			
FARER			
1700			
3.04° TCH 40			
RW36			
6 NM 5 NM			
CATEGORY	A	B	C D
LNAV MDA	580-1 520 (600-1)		NA
CIRCLING	580-1 518 (600-1)	660-1 598 (600-1)	NA

