

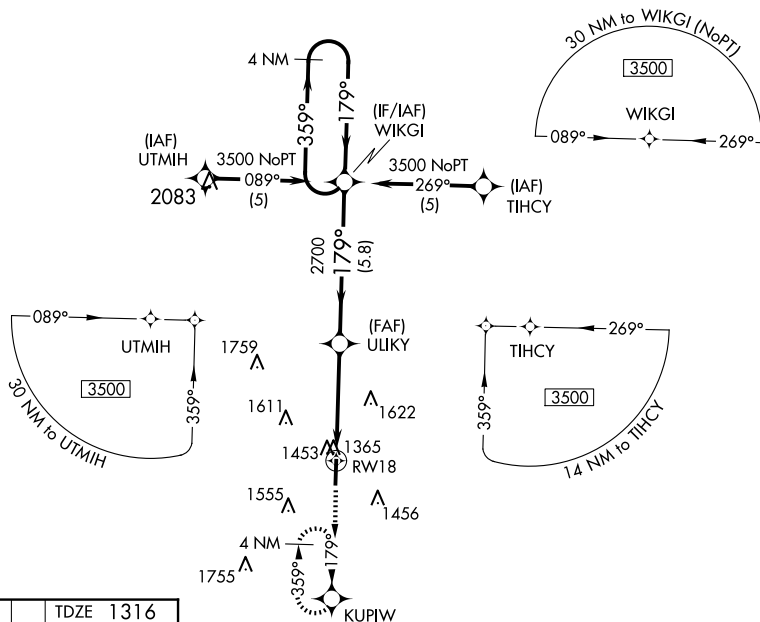
APP CRS 179°	Rwy Idg TDZE Apt Elev	5000 1316 1321
------------------------	-----------------------------	---

RNAV (GPS) RWY 18

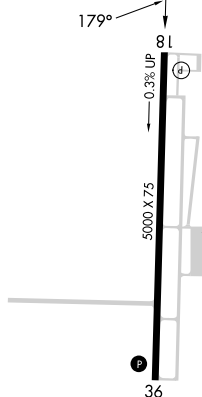
When local altimeter setting not received, use Springfield-Branson Ntl altimeter setting: increase LNAV/VNAV DA to 2043 feet; increase all MDAs 120 feet and Circling visibility Cat C/D ½ SM. Baro-VNAV NA when using Springfield-Branson Ntl altimeter setting. Baro-VNAV NA below -17° C (1° F). DME/DME RNP-0.3 NA.



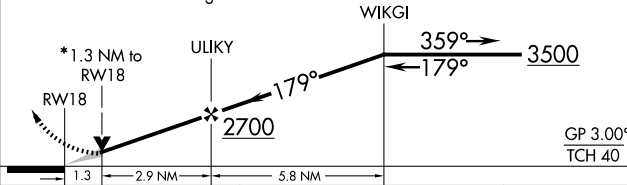
MISSED APPROACH: Climb to 3500 direct KUPIW and hold.

AWOS-3PT 118.975	SPRINGFIELD APP CON 121.1 290.5	CLNC DEL 123.725	UNICOM 122.8 (CTAF) 0
----------------------------	---	----------------------------	--



ELEV 1321		TDZE 1316
-----------	--	-----------



<div><div>3500</div><div></div></div>		<div><div>KUPIW</div><div></div></div>		<div><div>VGSI and descent angles not coincident (VGSI Angle 3.00/ TCH 40).</div><div>* LNAV only, VDP NA when using Springfield-Branson Ntl altimeter setting.</div><div>4 NM Holding Pattern</div></div>					
<div><div></div></div>		<div><div>GP 3.00°</div><div>TCH 40</div></div>							
CATEGORY		A		B		C		D	
GLS PA DA		NA							
LNAV/ LNAV DA		1937-2 ¼ 621 (700-2¼)							
LNAV MDA		1760-1 444 (500-1)				1760-1¼ 444 (500-1¼)			
CIRCLING		1820-1 499 (500-1)		1860-1 539 (600-1)		1980-1¾ 659 (700-1¾)		1980-2 659 (700-2)	

REIL Rwy 18 and 36 **L**
MIRL Rwy 18-36 **L**