

APP CRS
079°

Rwy Idg
TDZE
Apt Elev

5001
350
355

RNAV (GPS) RWY 8

J LYNN HELMS SEVIER COUNTY (DEQ)

RNP APCH-GPS.

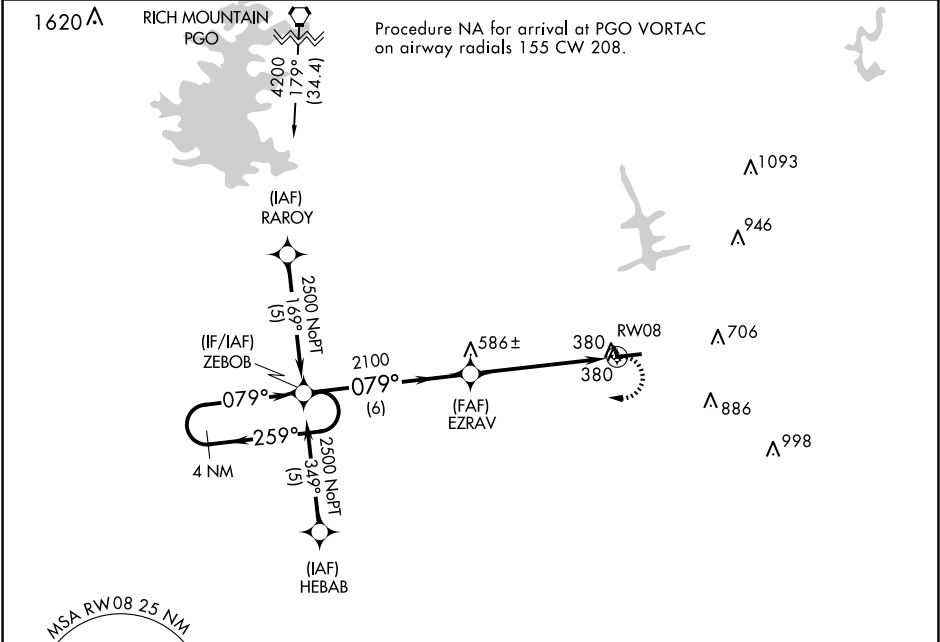
When local altimeter setting not received, use TXK altimeter and increase all MDAs 100 feet. Rwy 8 helicopter visibility reduction below 3/4 SM NA. Circling Rwy 26 NA at night.

MISSED APPROACH: Climbing right turn to 2500 direct ZEBOB and hold.

ASOS
134.075

FORT WORTH CENTER
123.925 269.475

UNICOM
122.8 (CTAF)



ELEV 355

TDZE 350

4 NM Holding Pattern ZEBOB

2500 \leftarrow 259° 079° \rightarrow

EZRAV

2100

3.05° TCH 45

RW08

6 NM 5.3 NM

2500 ZEBOB

5001 X 75 26 079°

CATEGORY	A	B	C	D
LNAV MDA	780-1	430 (500-1)	NA	
CIRCLING	900-1 545 (600-1)	920-1 565 (600-1)	NA	

REIL Rwy 8 and 26 \bullet
MIRL Rwy 8-26 \bullet